

**KINGSTON UNIVERSITY STUDENT NUMBERS
01 December 2008 Census - 2008/9 Academic Year**

The attached pages provide a summary profile of Kingston University's student population from the 01 December 2008 Census - the traditional Higher Education census date.

The Census data is extracted from the University Student Records System and corresponds to the HEFCE Higher Education Students' Early Statistics (HESES) Survey census date.

Students excluded: Dormant students; Students studying for the whole of their programme overseas; Incoming exchange students; Affiliated students; Students who left the institution before 01 December 2008; Students who start in 2008/9 but after 01 December 2008.

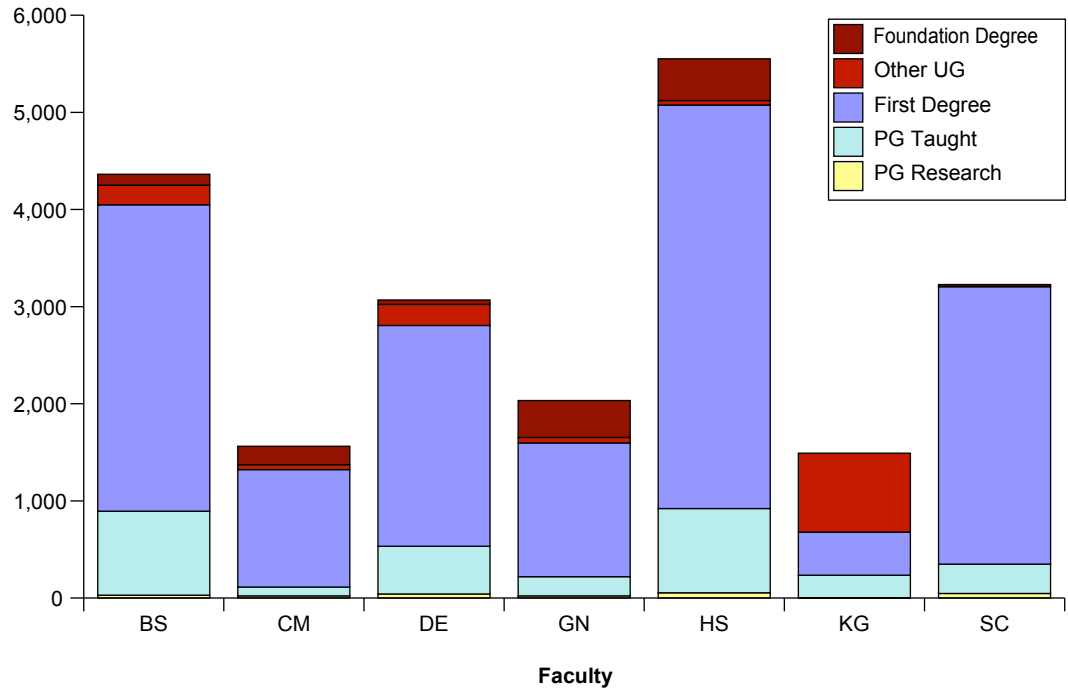
Page 2	Level & Mode by Faculty
Page 3	Summary Level & Mode; Gender by Faculty
Page 4	New Entrants by Level & Faculty
Page 5	Age on Entry
Page 6	Ethnicity
Page 7	Disability
Page 8/9	Fee Status
Page 10	Main University Sites
Page 11	UK Study Locations
Page 12	Geographical Area of Permanent Domicile
Page 13	Overseas Students Permanent Domicile

Census Student Summary - Level & Mode by Faculty - 1st December 2008

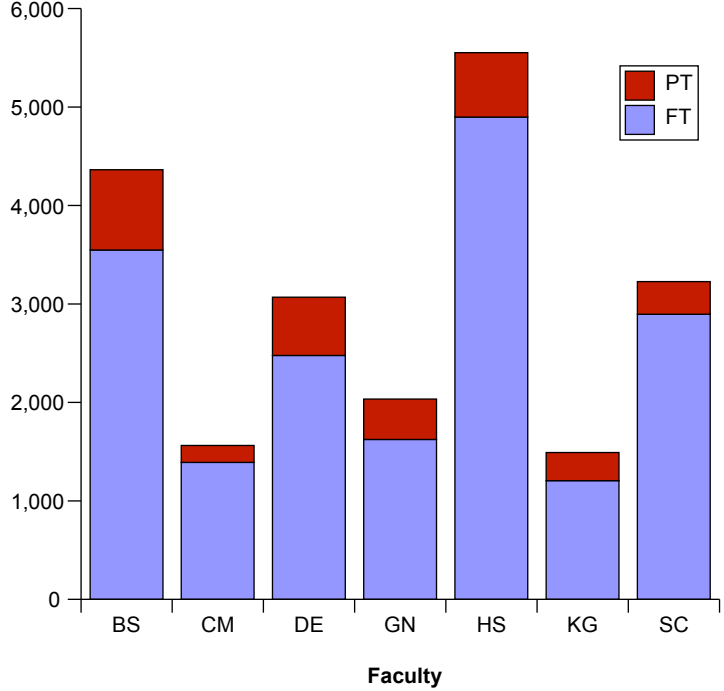
Faculty	Level of Study					Grand Total
	Foundation Degree	Other UG	First Degree	PG Taught	PG Research	
Art, Design & Architecture (DE)	46	216	2,274	491	42	3,069
Arts & Social Sciences (HS)	430	46	4,154	868	54	5,552
Business & Law (BS)	112	202	3,155	864	30	4,363
Comp, IS & Maths (CM)	189	52	1,209	90	23	1,563
Engineering (GN)	380	57	1,377	198	22	2,034
Health & Social Care Sciences (KG)	-	812	444	231	4	1,491
Science (SC)	19	3	2,857	301	48	3,228
Grand Total	1,176	1,388	15,470	3,043	223	21,300

Faculty	Mode		Grand Total
	FT	PT	
Art, Design & Architecture (DE)	2,477	592	3,069
Arts & Social Sciences (HS)	4,898	654	5,552
Business & Law (BS)	3,548	815	4,363
Comp, IS & Maths (CM)	1,392	171	1,563
Engineering (GN)	1,624	410	2,034
Health & Social Care Sciences (KG)	1,206	285	1,491
Science (SC)	2,896	332	3,228
Grand Total	18,041	3,259	21,300

Student Numbers by Level



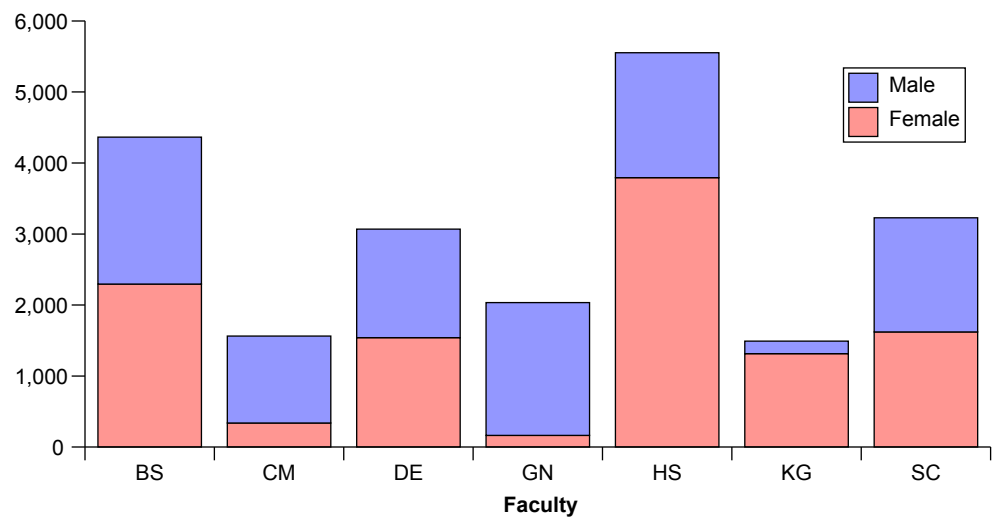
Student Numbers by Mode



Census Student Summary - Gender, Level & Mode 1st December 2008

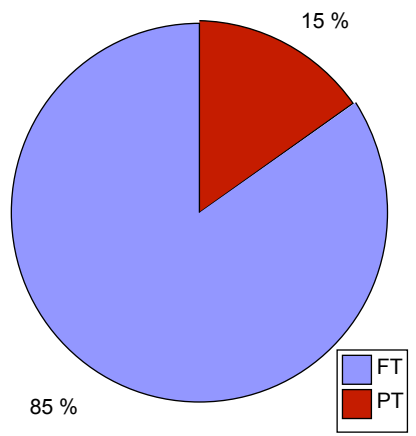
Gender			
Faculty	Female	Male	Grand Total
Art, Design & Architecture (DE)	1,541	1,528	3,069
Arts & Social Sciences (HS)	3,793	1,759	5,552
Business & Law (BS)	2,295	2,068	4,363
Comp, IS & Maths (CM)	339	1,224	1,563
Engineering (GN)	164	1,870	2,034
Health & Social Care Sciences (KG)	1,316	175	1,491
Science (SC)	1,622	1,606	3,228
Grand Total	11,070	10,230	21,300

Student Numbers by Gender

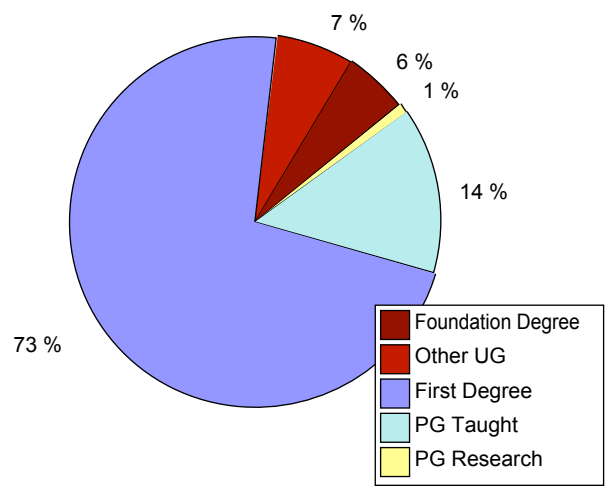


Mode			
Level	FT	PT	Grand Total
Foundation Degree	1,110	66	1,176
Other UG	1,279	109	1,388
First Degree	13,997	1,473	15,470
PG Taught	1,536	1,507	3,043
PG Research	119	104	223
Grand Total	18,041	3,259	21,300

Student Numbers by Mode



Student Numbers by Level

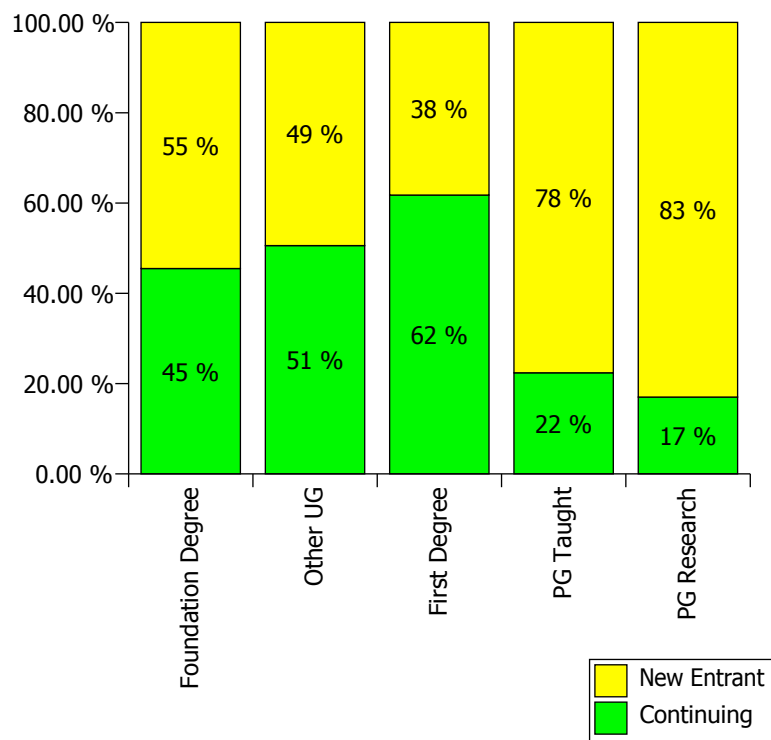


Census Student Summary - New Entrants by Level & Faculty - 1st December 2008

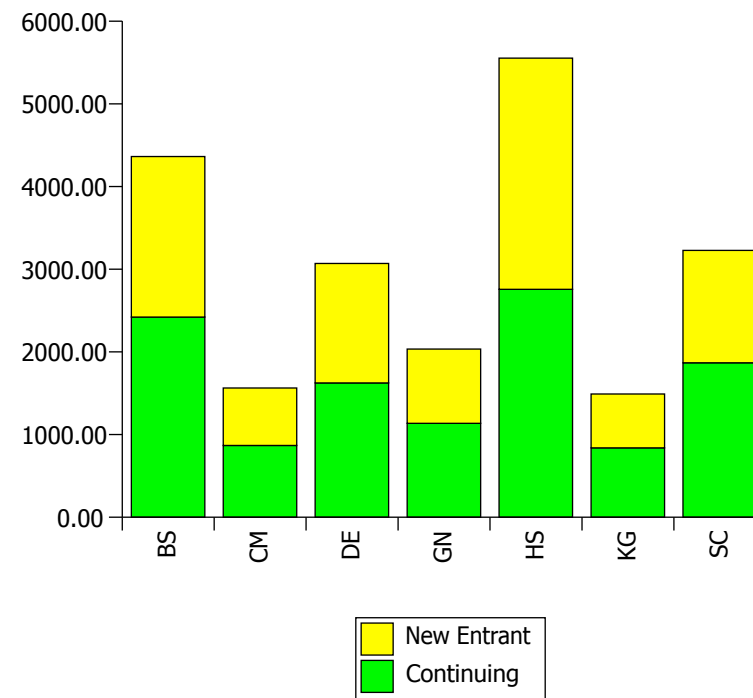
Faculty	Level of Study					Grand Total
	Foundation Degree	Other UG	First Degree	PG Taught	PG Research	
Continuing	535	702	9,557	682	38	11,514
New Entrant	641	686	5,913	2,361	185	9,786
Grand Total	1,176	1,388	15,470	3,043	223	21,300

Faculty	New Entrants		Grand Total
	Continuing	New Entrant	
Art, Design & Architecture (DE)	1,625	1,444	3,069
Arts & Social Sciences (HS)	2,756	2,796	5,552
Business & Law (BS)	2,421	1,942	4,363
Comp, IS & Maths (CM)	868	695	1,563
Engineering (GN)	1,136	898	2,034
Health & Social Care Sciences (KG)	840	651	1,491
Science (SC)	1,868	1,360	3,228
Grand Total	11,514	9,786	21,300

New Entrants by Level

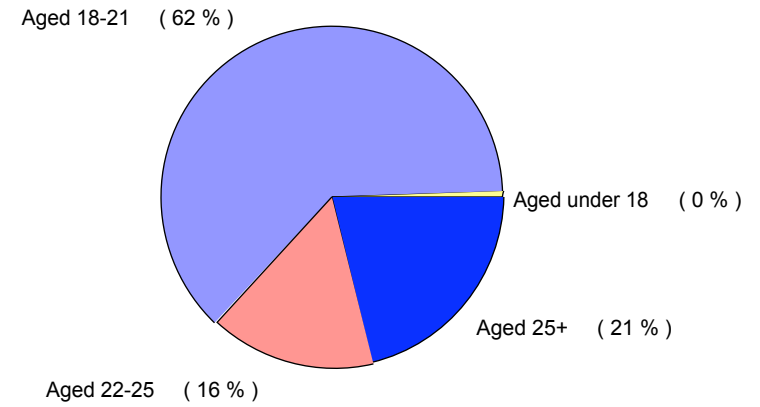


New Entrants

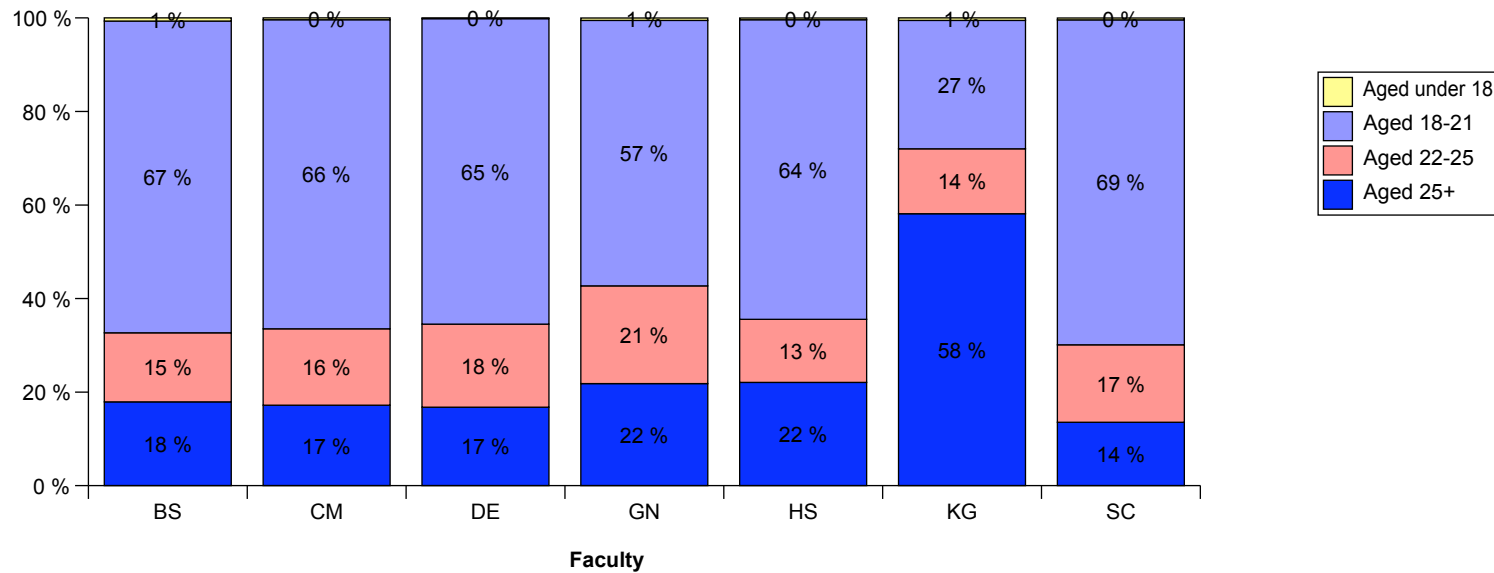


Census Student Summary - Age on Entry Profile - 1st December 2008

Faculty	Age on Entry				Grand Total
	Aged under 18	Aged 18-21	Aged 22-25	Aged 25+	
Art, Design & Architecture (DE)	5	2,004	545	515	3,069
Arts & Social Sciences (HS)	22	3,556	748	1,226	5,552
Business & Law (BS)	29	2,908	644	782	4,363
Comp, IS & Maths (CM)	6	1,033	255	269	1,563
Engineering (GN)	11	1,154	425	444	2,034
Health & Social Care Sciences (KG)	8	409	207	867	1,491
Science (SC)	13	2,243	534	438	3,228
Grand Total	94	13,307	3,358	4,541	21,300



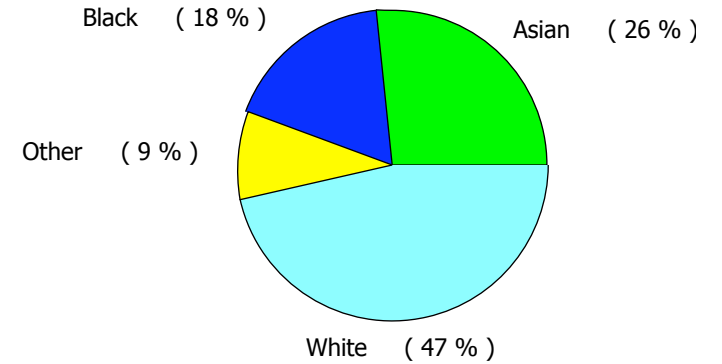
Student Numbers by Age on Entry



Census Student Summary - Ethnicity Profile

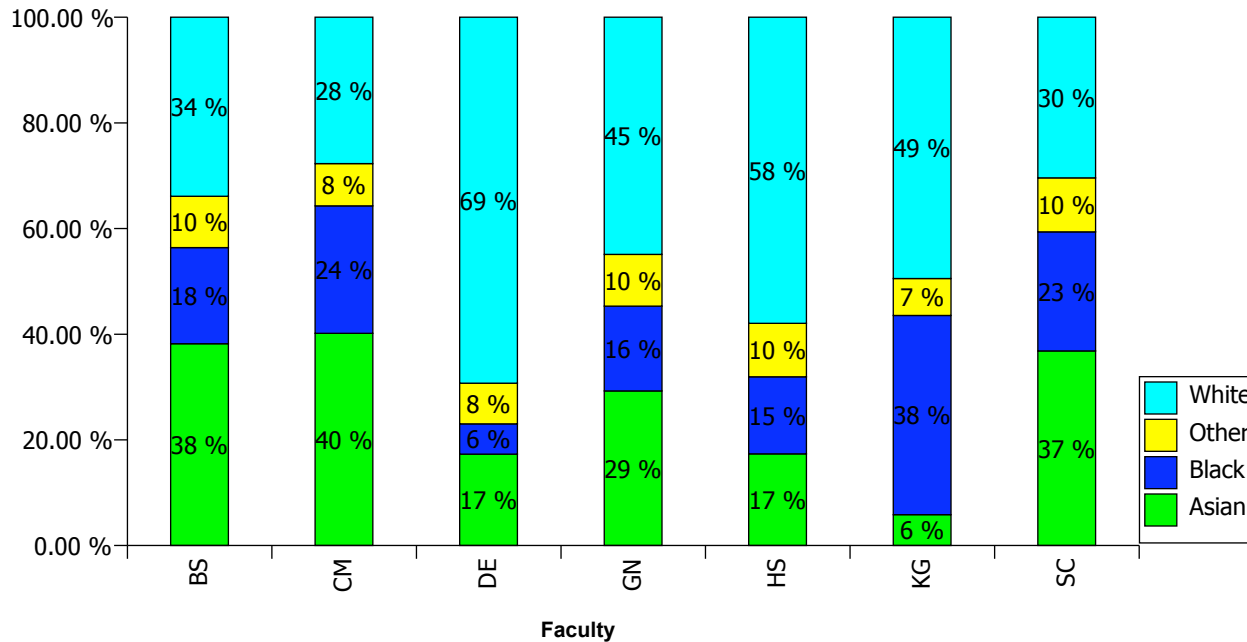
Faculty	Asian	Black	Other	Refused	White	Grand Total
Art, Design & Architecture (DE)	509	168	227	128	2,037	3,069
Arts & Social Sciences (HS)	929	781	542	198	3,102	5,552
Business & Law (BS)	1,573	749	400	246	1,395	4,363
Comp, IS & Maths (CM)	596	358	119	79	411	1,563
Engineering (GN)	553	303	185	145	848	2,034
Health & Social Care Sciences (KG)	86	556	103	17	729	1,491
Science (SC)	1,127	689	313	169	930	3,228
Grand Total	5,373	3,604	1,889	982	9,452	21,300

Overall University Ethnicity Profile (where available)



Student Numbers by Ethnicity

Ethnicity Profile (where available)

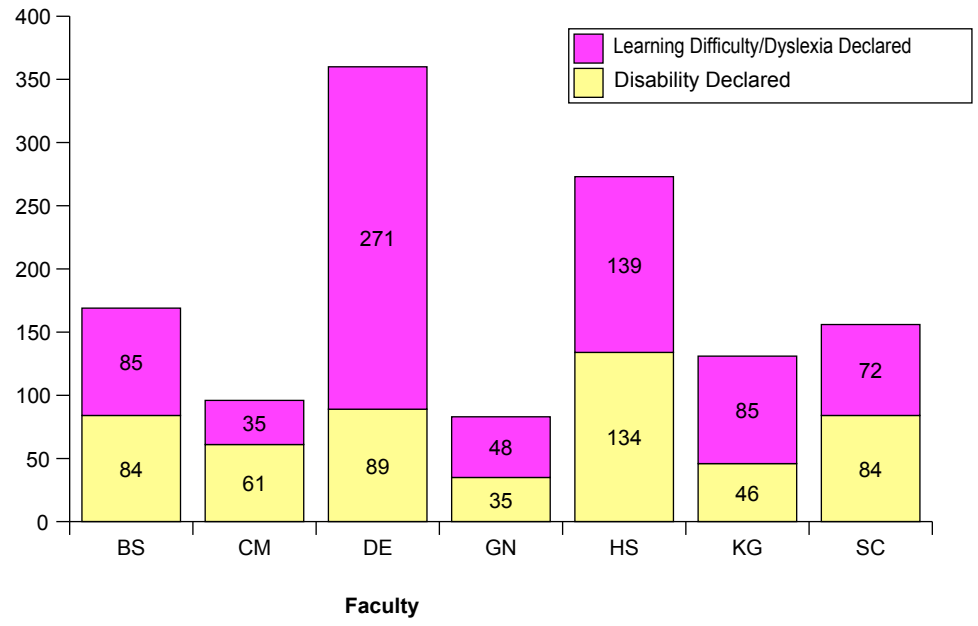


Census Student Summary - Disability Profile - 1st December 2008

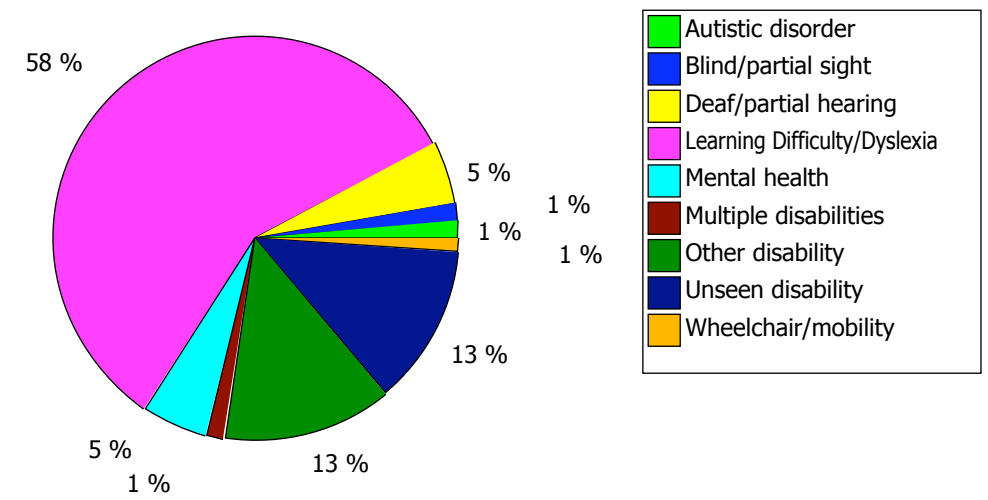
Disability Profile			
Faculty	Disability Declared	Learning Difficulty/Dyslexia Declared	Grand Total
Art, Design & Architecture (DE)	89	271	360
Arts & Social Sciences (HS)	134	139	273
Business & Law (BS)	84	85	169
Comp, IS & Maths (CM)	61	35	96
Engineering (GN)	35	48	83
Health & Social Care Sciences (KG)	46	85	131
Science (SC)	84	72	156
Grand Total	533	735	1,268

Disability Profile (declared only)	
Disability	Total
Autistic disorder	17
Blind/partial sight	18
Deaf/partial hearing	62
Learning Difficulty/Dyslexia	735
Mental health	67
Multiple disabilities	19
Other disability	171
Unseen disability	162
Wheelchair/mobility	17
	1,268

Student Numbers - Declared Disabilities



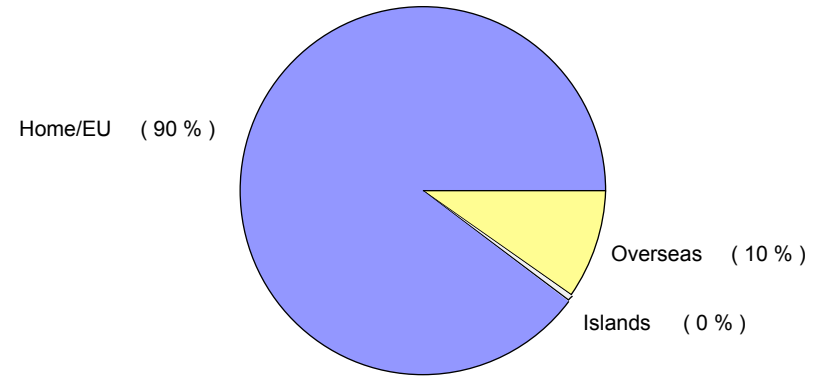
Declared Disabilities Proportion



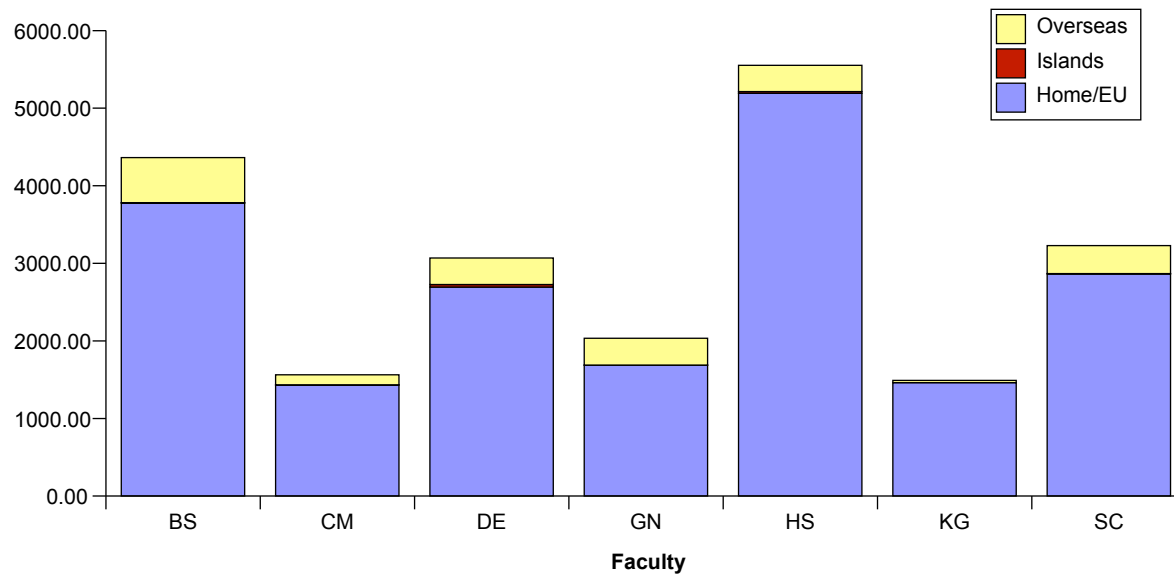
Census Student Summary - Fee Status Profile - 1st December 2008

Fee Status				
Faculty	Home/EU	Islands	Overseas	Grand Total
Art, Design & Architecture (DE)	2,694	32	343	3,069
Arts & Social Sciences (HS)	5,192	21	339	5,552
Business & Law (BS)	3,776	6	581	4,363
Comp, IS & Maths (CM)	1,431	3	129	1,563
Engineering (GN)	1,687	2	345	2,034
Health & Social Care Sciences (KG)	1,461	-	30	1,491
Science (SC)	2,864	3	361	3,228
Grand Total	19,105	67	2,128	21,300

Student Numbers by Fee Status



Student Numbers by Fee Status and Faculty

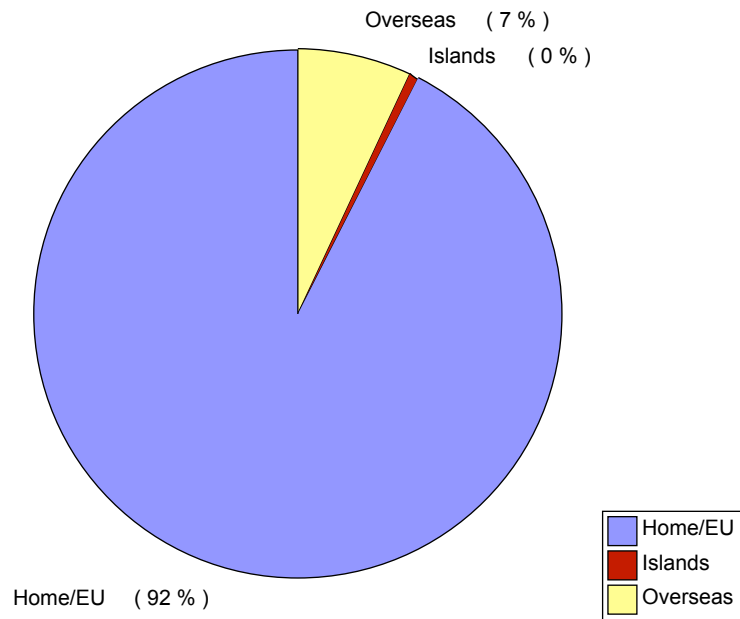


Census Student Summary - Fee Status by Level Summary - 1st December 2008

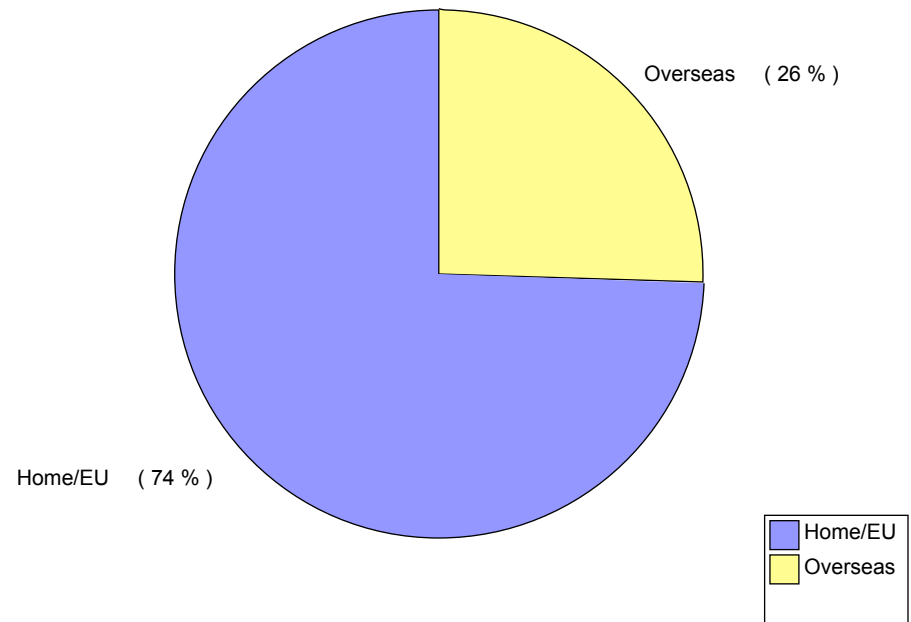
Fee Status				
Level	Home/EU	Islands	Overseas	Grand Total
PG	2,430	-	836	3,266
UG	16,675	67	1,292	18,034
Grand Total	19,105	67	2,128	21,300

Level		Home/EU	Islands	Overseas	Grand Total
PG	Continuing	597	-	123	720
PG	New Entrant	1,833	-	713	2,546
UG	Continuing	10,064	39	691	10,794
UG	New Entrant	6,611	28	601	7,240
Grand Total		19,105	67	2,128	21,300

Undergraduate Fee Status



Postgraduate Fee Status

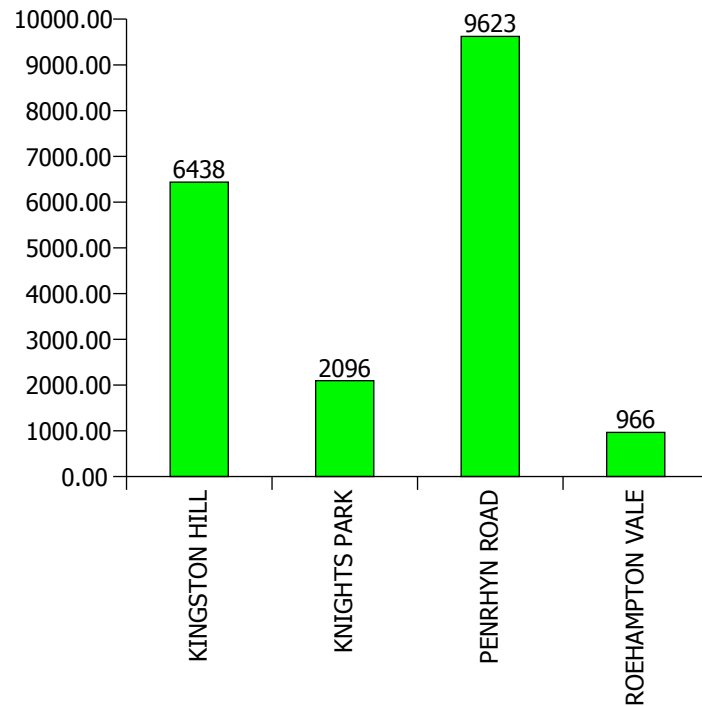


Census Student Summary - University Main Sites - 1st December 2008

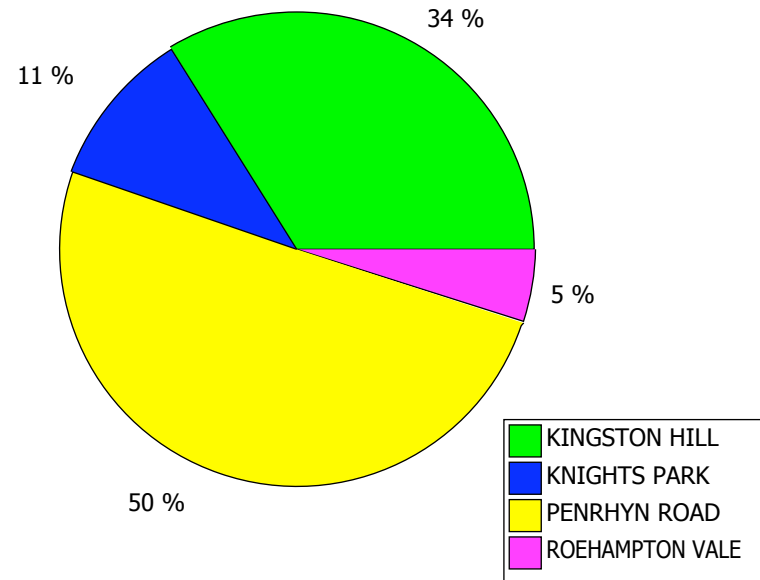
University Site	
KINGSTON HILL	6,438
KNIGHTS PARK	2,096
PENRHYN ROAD	9,623
ROEHAMPTON VALE	966
Grand Total	19,123

Faculty	Kingston College	Other UK	University Sites	Grand Total
Art, Design & Architecture (DE)	-	65	3,004	3,069
Arts & Social Sciences (HS)	110	391	5,051	5,552
Business & Law (BS)	310	229	3,824	4,363
Comp, IS & Maths (CM)	225	159	1,179	1,563
Engineering (GN)	32	379	1,623	2,034
Health & Social Care Sciences (KG)	-	-	1,491	1,491
Science (SC)	259	18	2,951	3,228
Grand Total	936	1,241	19,123	21,300

Student Numbers by Site



Student Numbers - Site Proportion



Census Student Summary - UK Locations - 1st December 2008

	Kingston College	Other UK	University Sites	Grand Total
British Airways (Heathrow Airport)	-	40	-	40
Building Crafts College	-	8	-	8
CITY OF BRISTOL COLLEGE	-	66	-	66
CRANWELL - RAF TRAINING CENTRE	-	20	-	20
DELPHI DIESEL	-	16	-	16
DESIGN MUSEUM LONDON	-	19	-	19
EASTWOOD PARK	-	28	-	28
European Pilot Training Academy	-	33	-	33
HMS Sultan	-	54	-	54
HOUNSLOW TEACHERS CENTRE	-	14	-	14
INDUSTRIAL PLACEMENT	-	1	-	1
KINGSTON COLLEGE	936	-	-	936
KINGSTON HILL	-	-	6,438	6,438
KNELLER HALL (ROYAL MILITARY SCHOOL	-	10	-	10
KNIGHTS PARK	-	-	2,096	2,096
MERTON COLLEGE	-	74	-	74
NESCOT	-	46	-	46
NEWCASTLE	-	95	-	95
NEWTEC	-	55	-	55
NORWICH (KLM)	-	46	-	46
PENRHYN ROAD	-	-	9,623	9,623
RICHMOND ADULT & COMMUNITY COLLEGE	-	25	-	25
RICHMOND COLLEGE	-	207	-	207
ROEHAMPTON VALE	-	-	966	966
SOUTH THAMES COLLEGE	-	129	-	129
SPELTHORNE COLLEGE	-	60	-	60
SURREY TEACHERS CENTRE	-	34	-	34
University of Surrey (Guildford)	-	8	-	8
VEOLIA - Staines	-	25	-	25
WEST THAMES COLLEGE	-	69	-	69
WHITEFIELDS SCHOOL	-	59	-	59
	936	1,241	19,123	21,300

Census Student Summary - Geographical Area of Domicile - 1st December 2008

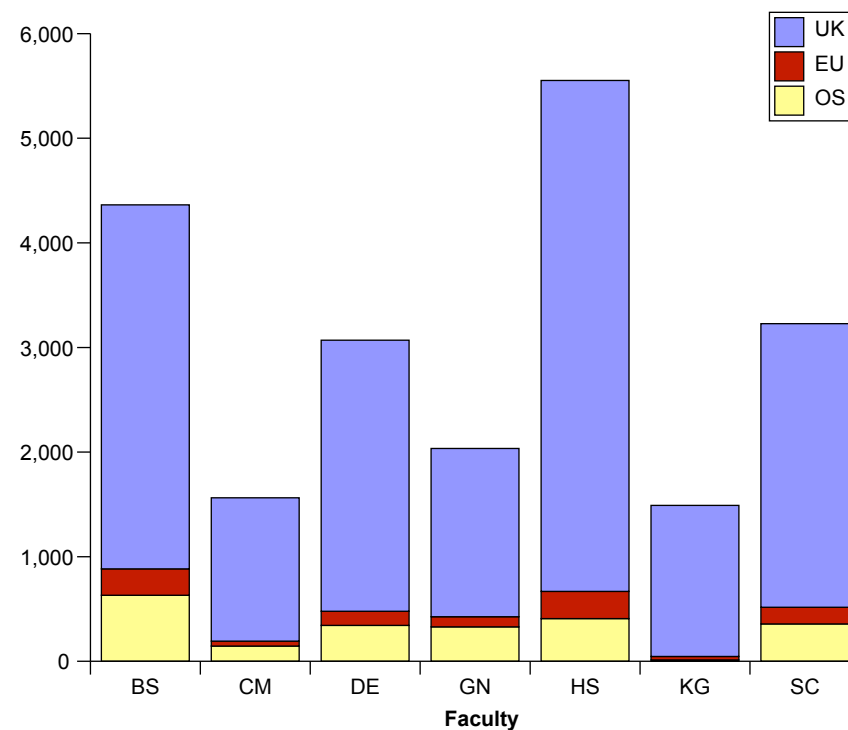
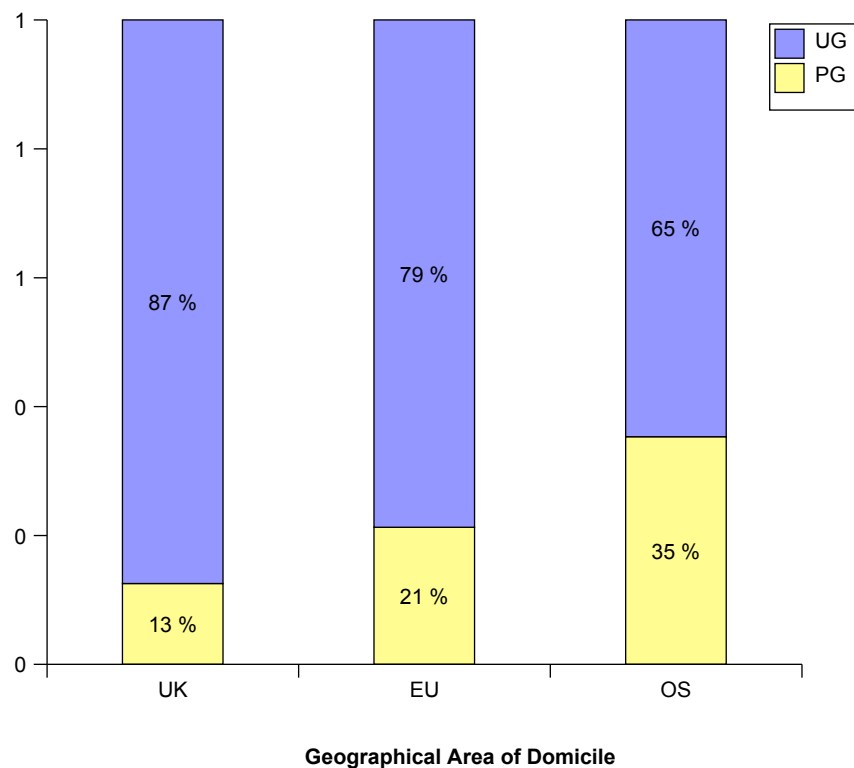
Geographical Area of Domicile

Level	UK	EU	OS	Grand Total
PG	2,269	209	788	3,266
UG	15,819	773	1,442	18,034
Grand Total	18,088	982	2,230	21,300

Geographical Area of Domicile

Faculty	UK	EU	OS	Grand Total
Art, Design & Architecture (DE)	2,591	134	344	3,069
Arts & Social Sciences (HS)	4,884	259	409	5,552
Business & Law (BS)	3,479	253	631	4,363
Comp, IS & Maths (CM)	1,370	47	146	1,563
Engineering (GN)	1,608	97	329	2,034
Health & Social Care Sciences (KG)	1,445	33	13	1,491
Science (SC)	2,711	159	358	3,228
Grand Total	18,088	982	2,230	21,300

Student Numbers by Geographical Area of Domicile



Census Student Summary - Non-UK Domiciles - 1st December 2008

India	323	Hungary	12	Philippines	3
Greece	199	Kazakhstan	12	Senegal	3
Cyprus	190	Bangladesh	11	Sierra Leone	3
China	165	Bermuda	11	Sudan	3
Korea (South)	106	Estonia	10	Tunisia	3
Sri Lanka	101	Luxembourg	10	Ukraine	3
Germany	100	Slovakia	10	Zimbabwe	3
Hong Kong	92	Vietnam	10	Algeria	2
Ireland	87	Barbados	9	Azerbaijan	2
Iran	86	Finland	9	Bahrain	2
Poland	78	Maldiv Islands	9	Benin	2
Norway	77	Serbia	9	Bosnia and Herzegovina	2
Nigeria	67	South Africa	9	Croatia	2
Pakistan	67	Albania	8	Dominica	2
Sweden	65	Australia	8	Georgia	2
United States of America	65	Egypt	8	Guyana	2
France	60	Uganda	8	Jamaica	2
United Arab Emirates	60	Brunei	7	Libyan AR	2
Lithuania	54	Denmark	7	Macao	2
Italy	52	Malta	7	Mongolia	2
Portugal	49	Mexico	7	Namibia	2
Spain	48	Nepal	7	New Zealand	2
Japan	42	Oman	7	Peru	2
Thailand	42	Qatar	7	St Lucia	2
Gibraltar	39	Afghanistan	6	Turkmenistan	2
Romania	38	Angola	6	Uzbekistan	2
Taiwan	38	Brazil	6	Zambia	2
Russia	37	Cyprus (European Union)	6	Anguilla	1
Turkey	36	Iceland	6	Antigua and Barbuda	1
Mauritius	33	Indonesia	6	Armenia	1
Canada	31	Iraq	6	Belize	1
Bulgaria	29	Morocco	6	Burkina Faso	1
Kuwait	29	Tanzania	6	Chile	1
Saudi Arabia	29	Colombia	5	Cyprus (Non-European Union)	1
Netherlands	24	Singapore	5	Dominican Republic	1
Kenya	22	Trinidad and Tobago	5	Eritrea	1
Malaysia	21	Botswana	4	Faroe Islands	1
Jordan	20	Burma	4	Gambia	1
Austria	19	Somalia	4	Grenada	1
Ghana	19	Syria	4	Honduras	1
Belgium	18	Belarus	3	Ivory Coast	1
Lebanon	16	Bolivia	3	Kyrgyzstan	1
Switzerland	14	Cayman Islands	3	Lesotho	1
Czech Republic	13	Israel	3	Liberia	1
Latvia	13	Malawi	3	Moldova	1

Census Student Summary - Non-UK Domiciles - 1st December 2008

Montserrat	1
Mozambique	1
Rwanda	1
Seychelles	1
Slovenia	1
St Vincent	1
Turks and Caicos Islands	1
Venezuela	1
Grand Total	3,212