

Science

Sustainability, Environment and Change PgCert/PgDip/MSc



Sustainability, Environment and Change

PgCert/PgDip/MSc

About the course

Why choose this course?

This course is for those who want to learn more about the concepts and issues underpinning sustainability and sustainable use of environmental resources, and how these concepts apply to practical decision making across diverse aspects of contemporary society. The focus of the programme is on living with climate change and attendant environmental change, and understanding causes, remedies and the relative merits of different 'solutions'.

Our responses to these challenges affect business and industry, financial management, local and national government strategy, building design, wildlife conservation, environmental systems and resources, global geopolitics and community stability; in short, the very fabric of our lives and global ecosystems. This programme explores the underpinning science, examines mitigation opportunities and evaluates legislation, environmental management, and economic and social response options.

What will you study?

This course is part of a new suite of postgraduate sustainability programmes, which also includes Sustainability for Built Environment Practice MA/MSc and Sustainability, Law and Practice LLM, aimed at the next generation of sustainability professionals. You will study in a lively and stimulating context, debating and discussing with postgraduates and staff experts from diverse related courses, research or consultancy backgrounds, and with a range of distinctive professional viewpoints.

The course has a strong multidisciplinary approach based on three core modules, The Challenge of Climate Change, Environmental Law and Regulation, and Economic Sustainability, which are run in parallel across the sustainability suite, enabling shared teaching, debates and discussions. The Sustainable Environmental Management module links with industry and local government, providing clear insights into consultancy practice and challenges, while its practical work also embraces students from a range of related courses and diverse academic backgrounds. The Water Resources Management module completes the core systematic programme.

Emphasis is placed on participatory learning supported by field trips, guest speakers and the activities of the Kingston University Sustainability Hub (www.kingston.ac.uk/sustainability). The Research Methods module is integral to your learning, underpinning the final substantive piece of independent research. The course concludes with a conference-style presentation of your research, reflecting the importance placed on communicating effectively with specialists and non-specialists alike.

Special features

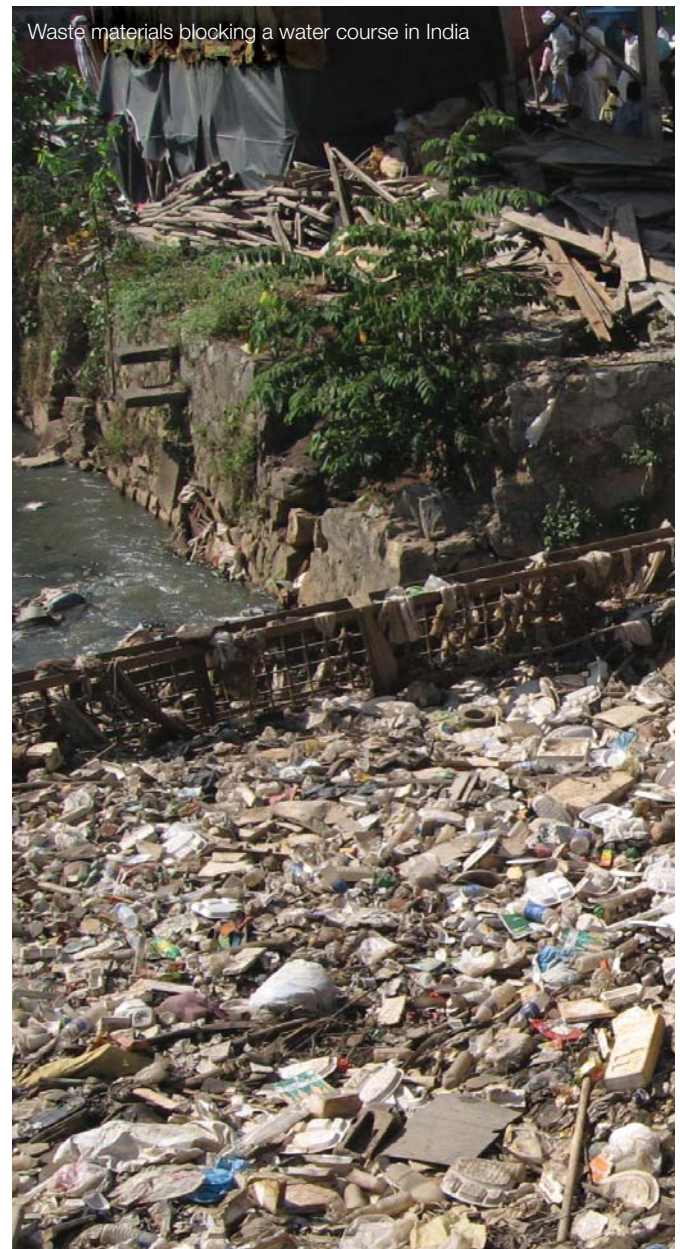
- This course is one of a new suite of postgraduate sustainability programmes, which brings together experts and professionals with a range of distinctive professional viewpoints.
- The Sustainability, Environment and Change course focuses on living with climate and attendant environmental change, and understanding causes, remedies and the merits of different 'solutions'.
- You can build in your own interests by choosing from a number of option modules. The research project gives you the chance to further specialise and gain valuable research skills.
- You will have access to specialist research laboratories and analytical facilities, as well as the C-SCAIPE reading room and resource centre, which holds an extensive collection of governmental, business and NGO publications on sustainability themes.

Careers

There is a strong demand for professional experts in sustainability and environmental issues, as these areas contain the key challenges and questions facing our society. This increasing awareness of environmental problems has generated new legislation and a need for professionals who can assist industry, business and policy makers in appropriate responses and development. This programme will equip you to work with, and lead, multidisciplinary teams of professionals, enhancing your broad career opportunities in both the public and private sectors.

Recent graduates work in a wide range of organisations, including:

- Local authorities and governmental organisations, as advisers on sustainability policy, carbon management, waste management and sustainable procurement; and
- Major corporations, SMEs and charities, across diverse sectors from food to finance, construction to retail, advising on sustainability policy, greening supply chains, energy saving, carbon footprints, waste and water management, legal compliance and related topics.



Course structure

The full masters programme features eight taught modules, two of which are option modules, plus the research project. If you are unable to commit to the full masters programme, intermediate qualifications (PgCert and PgDip) are available. The PgDip features eight taught modules and the PgCert four. Each module is worth 15 credits.

Semester 1

Core modules

- The Challenge of Climate Change
- Environmental Law and Regulation
- Water Resources Management

Option modules

You can choose one from:

- Waste Management and Contaminated Land Remediation
- Regeneration
- Minerals and Energy Resources
- Contemporary Issues in Environmental and Earth Resources Management*

Semester 2

Core modules

- Economic Sustainability
- Sustainable Environmental Management
- Research Methods and Data Analysis

Option modules

You can choose one from:

- Sustainable Cities
- Biodiversity and Conservation
- Contemporary Issues in Environmental and Earth Resources Management*

*This is a desk-based research module involving independent work guided by a supervisor. You may select this module once during the programme.

Semester 3

Research Project

In addition to eight taught modules an appropriate research project worth 60 credits is required to complete the MSc. The project will be in an area of your interest and may be linked to work activity, overseas- or UK-based research. Each student is allocated a staff supervisor.



Waste sorting and recycling facility in Almería, Spain



Packing and distribution cooperative for food produced using plasticultura techniques in Almería, Spain



Dry-land golf course development near Marrakech, Morocco

Sustainability, Environment and Change

Entry requirements

- A good honours degree or equivalent; and/or
- appropriate professional experience.

Although there is no prescription on the subject of your first degree, it is expected that applicants will have some demonstrable knowledge within a related discipline obtained through formal study or work experience.

International students whose first language is not English must also have an overall IELTS score of 6.5 or above with 6.0 in writing (or an equivalent qualification).

Attendance

Full-time students will be expected to attend two days per week, while part-time students will be expected to attend one day per week.

Duration

One year full time or two years part time, with a September or January start.

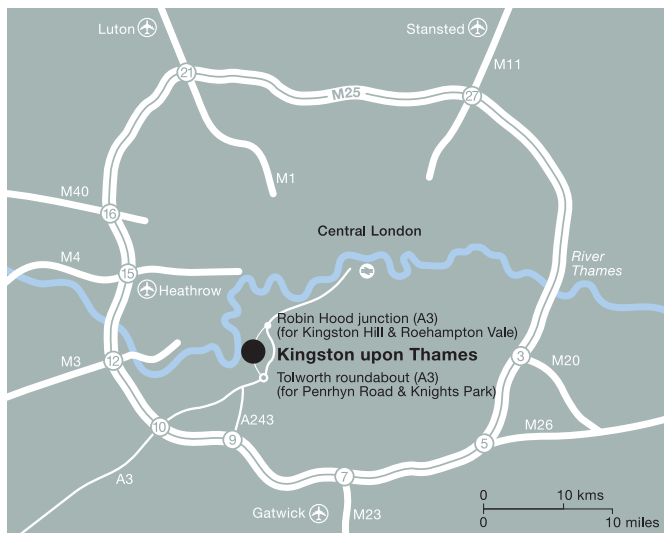
Teaching and assessment

Teaching is strongly interactive involving debates, role-plays, workshops, seminars and some independent, as well as staff-led, site visits. Team work, negotiating and reflective skills are all important as is the ability to prioritise effectively in managing your work. Distance learning supplementary materials are available for some core modules.

Most modules, including all core modules, are assessed by coursework activities including essays and reports, mock consultancy bids, case studies and oral presentations. Option modules may include a timed examination as part of the assessment.

Location

Located beside the Thames, Kingston University is within the London travel-pass zone. Easily accessible from surrounding areas such as Surrey and Middlesex, its local train stations (Kingston; Surbiton) are also only 25 minutes from Waterloo.



Students visiting a desalination plant

Further information

Contact details

Please contact the Faculty's Admissions Office for an application form or if you have any further queries.

Admissions Office (Postgraduate Courses)
Faculty of Science
Kingston University
Penrhyn Road
Kingston upon Thames
Surrey KT1 2EE

T: +44 (0)20 8417 7419

E: postgradenquiriesnb@kingston.ac.uk

Apply online www.kingston.ac.uk/pgsustainabilityenvironmentchange