

TEACHERS AND COMMUNITY CENTRE PROJECT

KAMWENGE DISTRICT UGANDA 2010/2011

Summary

The aim of the Teachers and Community Centre is to promote educational links and the exchange of skills between the UK and Uganda. This project will build on existing relationships between various individuals and organisations in the UK and Uganda and will ensure that these relationships are sustainable and strengthened. This new project will result in the establishment of further successful links. The Centre will be purpose built, providing accommodation for up to 8 visiting teachers or students. After initial start-up costs the Centre will be self-financing and could also generate income, to be re-invested in the Centre, by providing services to the local community.

Background

For several years there have been links between Equatorial College School (ECS), Uganda and schools in London.

More recently further links have been developed. Since 2006 Kingston University School of Education have sent a number of PGCE and BA students to Uganda to visit schools, teach, exchange ideas and resources and to establish ongoing links.

For example:

- Kabujogera Progressive Primary School is linked with a primary school in London, resulting in letter exchanges, fundraising and a greater understanding of the global dimension in both schools.
- Kashangura Primary is linked with a Surrey school. The staff and children have exchanged letters, resources and ideas. Bell Farm held a 'Uganda week' and has developed the global dimension – the school is currently working towards Level 2 International School Award. Ben Cooper who visited Uganda in 2007 was a PGCE student at Kingston 2006/7 and is a teacher at Bell Farm Junior School. This is one of the School of Education's Partnership schools.

These links have so far been established based on the goodwill and generosity of Mr Kamasaka (President of ESC), guests are accommodated in his own house. The enthusiasm for educational links in both the UK and Uganda is considerable and a more sustainable, longer-term solution is required. From a UK perspective 14 school and university students visited Mr Kamasaka in 2009 alone. Developing global partnerships in education is now a priority for the UK Department for International Development, through their 'World Classroom' and 'Global School Partnership' programmes. To ensure the continued success of existing links and the development of new partnerships it is important that this project is put on a viable and sustainable footing.

Concept

The Teachers and Community Centre will be a lodging and meeting place, primarily for teachers and students coming to volunteer at Equatorial College School and other primary and secondary schools in the local area. The aim is to broaden the

understanding of the 'global dimension' for UK students, teachers and visitors and to be a means of exchanging skills, ideas and resources with Ugandan teachers and members of the local community.

Initially the central structure will contain a reception/lounge area, office, four 2-bed rooms, washing facilities and a meeting hall. A kitchen, staff houses and a gatekeeper's house will also be needed to make the centre operational. Future construction will depend on demand and feedback. The centre will be entirely eco-friendly with solar panels providing power and potential projects within the compound including a fish farm pond. There is also soon to be a hydropower project launching nearby which the centre will be able to tap into. All food for the centre will come from surrounding farmers, supporting the local economy. Water supply comes from a gravity water system that was recently built in the area. The one and a half acre site for this project has been purchased and is conveniently located 2.3km from the Kamasaka residence, 3.7km from Kabujogera village and 5.4km from Equatorial College School. The nearest large town is Ibanda in South West Uganda.

When volunteers are not in residence the centre can be used as a community centre, for example hosting teacher training days, local government workshops and weddings. Rooms will also be available for rent by the public if not occupied by visiting teachers. This will help ensure running costs are met and ensure that enough income generation is created to prevent the need for fundraising after the start-up costs. As part of the community-angle of the project we could also support the local economy by selling local crafts at the centre.

Costings

Once up and running the centre will aim to cover all its costs and turn a small surplus for re-investment. Initial capital expenditure has to be raised from donations and funding agencies. It is expected the upkeep of the centre will be met by contributions by visiting volunteers and by renting out the meeting hall and compound for events. If the rooms are being used by tourists or private clients then they will attract a slightly higher charging rate. The estimated cost to complete phases 1 and 2 will be in the region of 60 million Uganda shillings (£21,500).

Phase 1 (2009-2010): Purchase of appropriate site (completed), growing of border hedge and planting of shelter trees (completed), drawing of architectural plans for central structure (completed – see appendix), securing donations and pledges. Begin construction (first floor completed). Total raised £5000.

Phase 2 (2010-2011): Undertake building of central structure, kitchen, staff houses and gatekeeper's hut, plant flowerbeds, levelling of campsite area, purchase generator and solar panels.

Phase 3 (2011 onwards): Undertake building of dining area and further self-contained rooms if demand requires, consider optional extras such as computer room, satellite television and Internet connection.

The Next Stage:

Kingston University students from the School of Education who have volunteered to work in Uganda schools and other visitors recently complete the Kingston half marathon to raise funds for the project. This has raised a further £5000 for the centre and will allow building to resume on Phase 2.

The aim now is to raise the remainder of the money needed to complete the major building stage and make the centre operational, if possible from the beginning of the academic year 2011/12. This will then enable students, university staff and partnership school teachers to visit Uganda to support and help develop education in this rural area of Uganda.

If you would like to make a contribution you can do so through Just Giving. This is a safe and easy way to contribute on line (used by many charities and the London Marathon). The name of the Teachers and Community Centre Project is called “EDUCATE” and it received official HMRC Charity status in March 2010 (Charity number XT21606).

Please make donations by going to: justgiving.com/educate. All contributions will be acknowledged and you will be kept up to date with progress on the Centre.

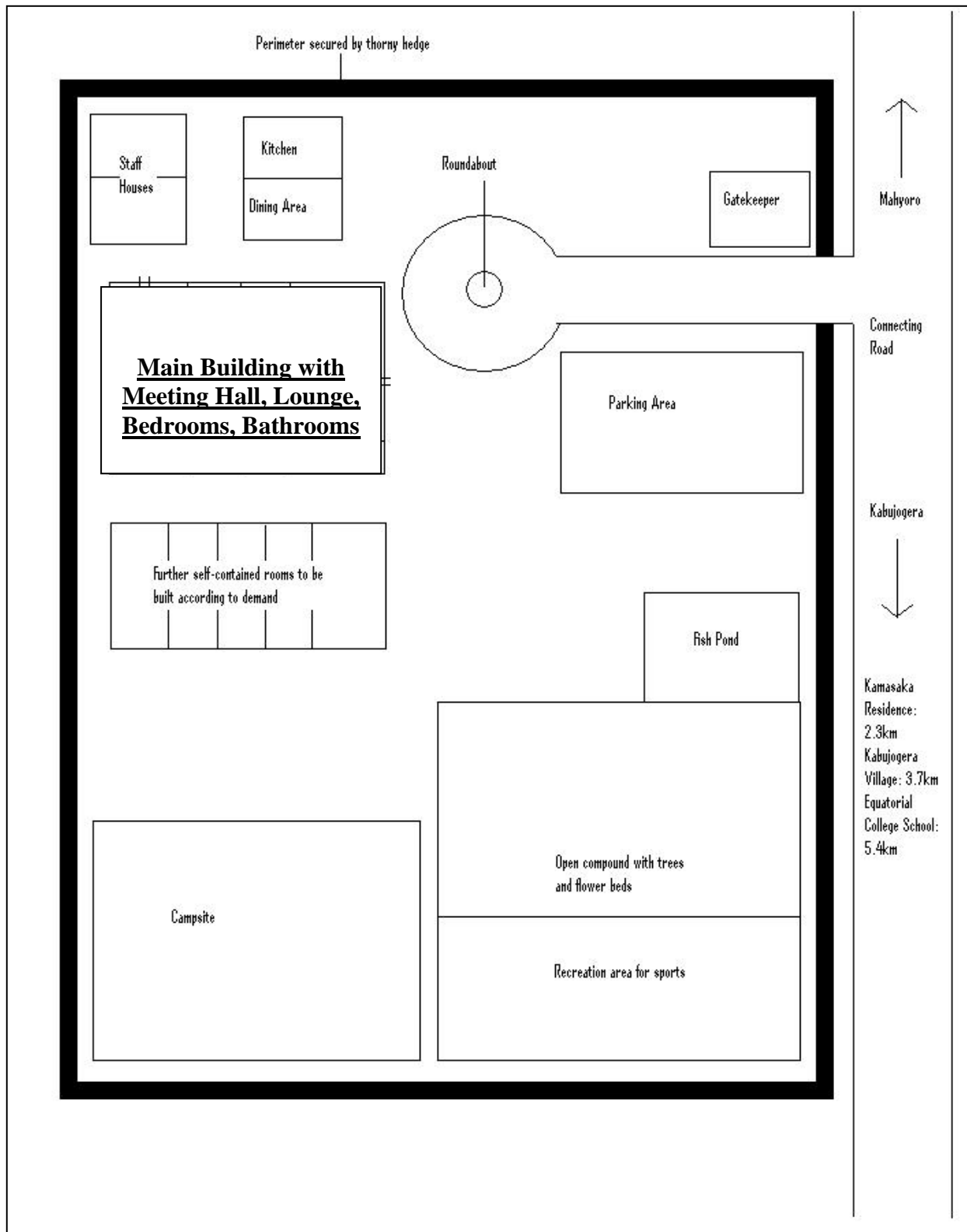
Thank You

Andrew Powell

School of Education
a.powell@kingston.ac.uk

June 2010

Sketch Plan of 'Teachers' Centre' Site:



Photos of original site

