

# **JANET ROAMING SERVICE**

## **How to Configure the Macintosh OSX supplicant**

12 September 2008

V1.0

This document explains how to configure your Macintosh OSX wireless laptop to use the JANET Roaming Service (JRS) at Kingston University.

## STEP 1: SELECT THE EDUROAM WIRELESS NETWORK

Click on the **AirPort icon** on the top right of the screen

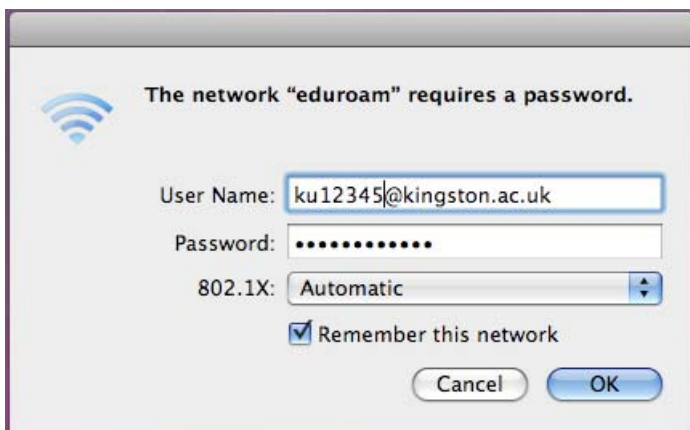
Select **Turn AirPort On**

Click on the **AirPort icon** again and select **eduroam**



## STEP 2: CONNECT TO EDUROAM

The following window will appear:



Enter your username in the following format:

[username@institution.ac.uk](mailto:username@institution.ac.uk)

Enter your institution password

If you are a Kingston user, this would look like this:

[kxxxxxx@kingston.ac.uk](mailto:kxxxxxx@kingston.ac.uk)

If you tick the **Remember this network** box, you will not be asked to re-enter your credentials next time you connect to **eduroam**. However, you will have to re-enter this information if you change your password at some time in the future.

Select **OK**

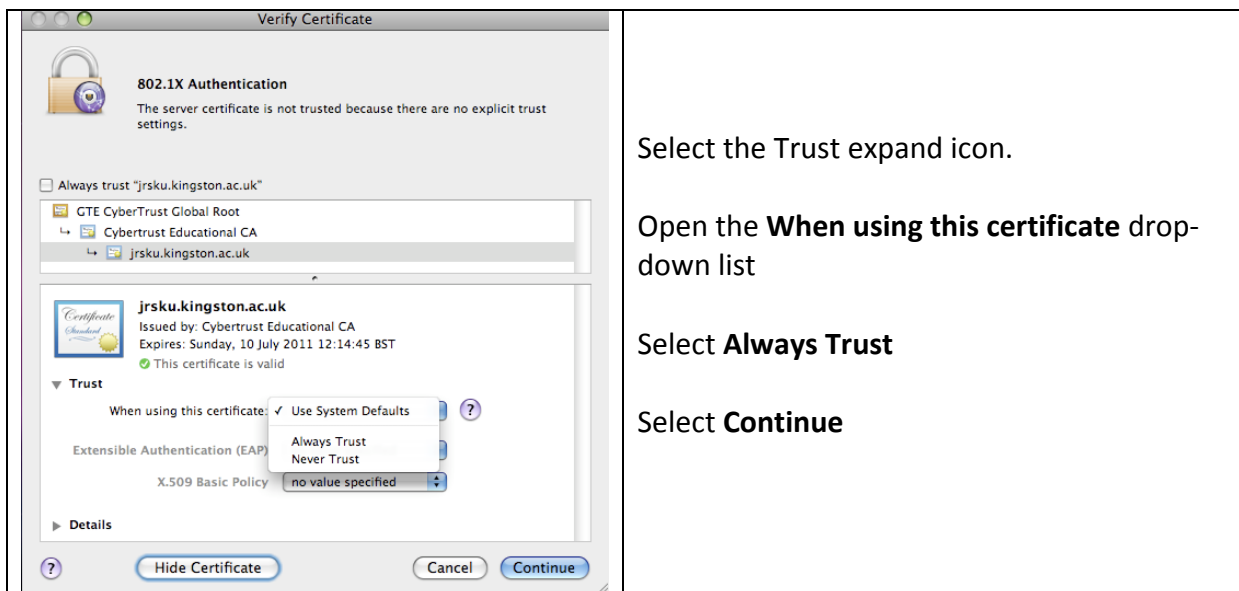
You will then see the following window:



Select **Continue**

Our server certificates are signed by the Cybertrust Educational Certificate Authority and **can** be trusted.

Click **Show Certificate**



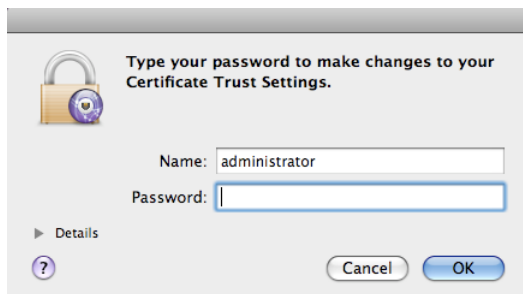
Select the Trust expand icon.

Open the **When using this certificate** drop-down list

Select **Always Trust**

Select **Continue**

You have to provide your administrator username and password to store the change.



Open your browser

You will be authenticated to your institution Organisational RADIUS service. If this succeeds, you will be allocated an IP address and connected to the internet external to the Kingston University firewall.