

JANET ROAMING SERVICE

How to Configure the Windows 7 802.1x supplicant

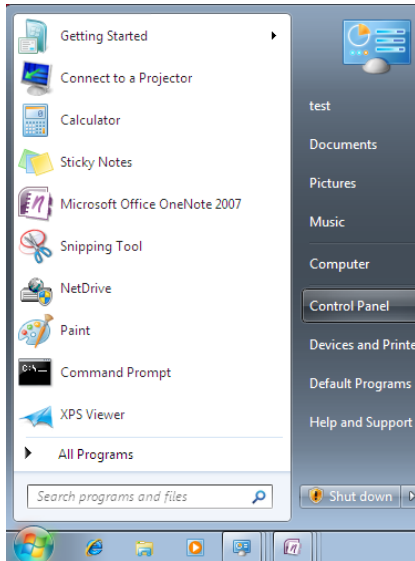
This document explains how to configure your Windows 7 wireless laptop to use the JANET Roaming Service (JRS) at Kingston University.

We describe how to configure your Window 7 laptop to use the eduroam wireless service and how to make a connection

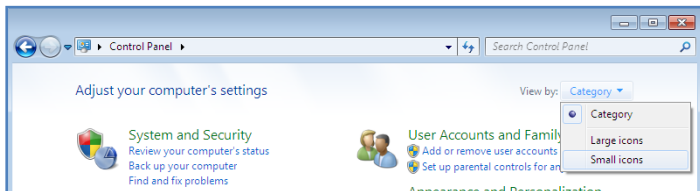
STEP 1: CREATE A WIRELESS NETWORK PROFILE

Make sure your wireless adaptor is turned on. Click the Windows Logo Start Button

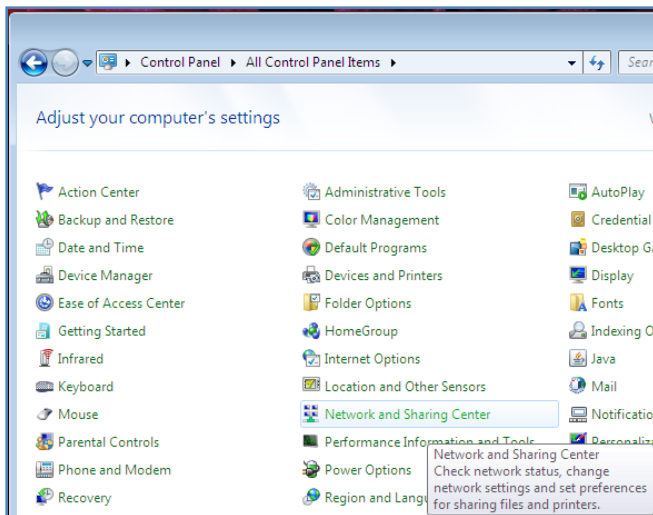
Select **Control Panel**



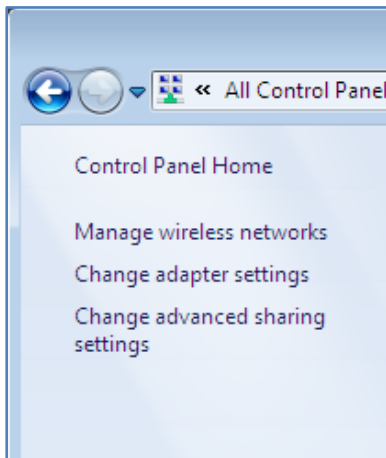
Select **View by: Small icons**



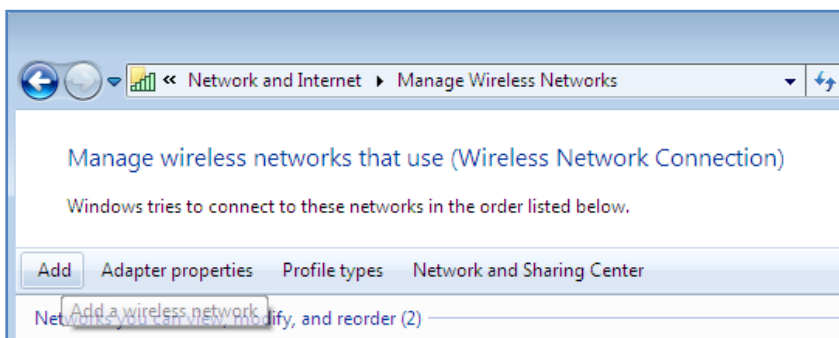
Select **Network and Sharing Centre**



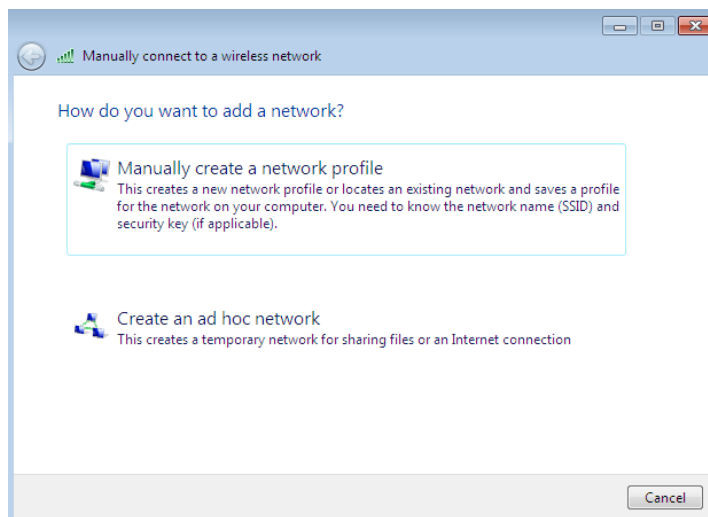
Select **Manage wireless networks**



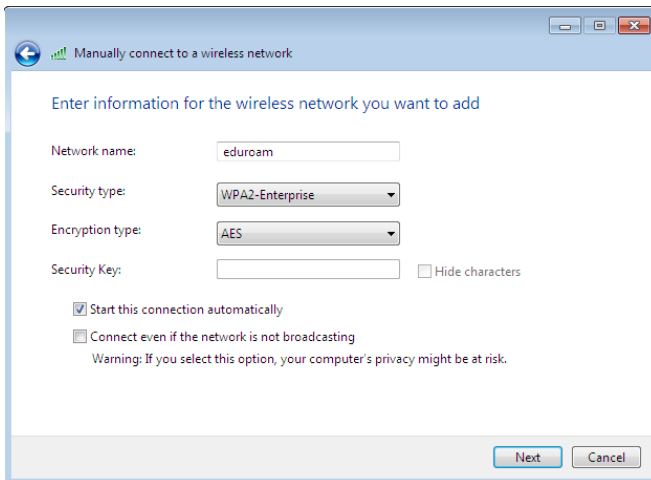
Select **Add**



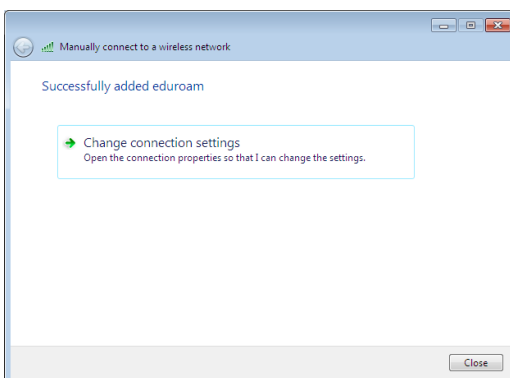
Select **Manually create a network profile**



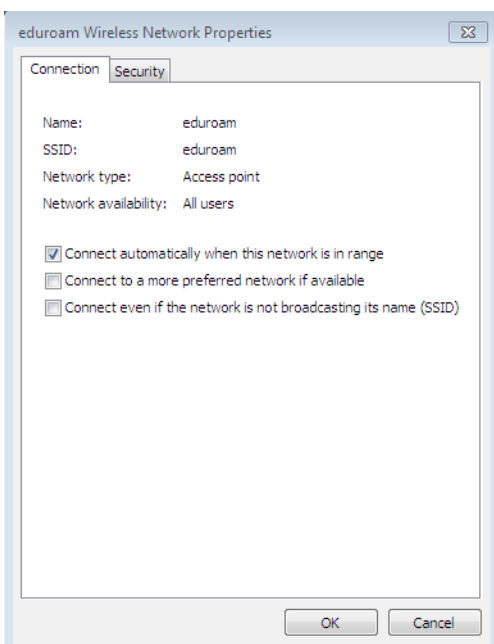
Add the following information then click **Next**



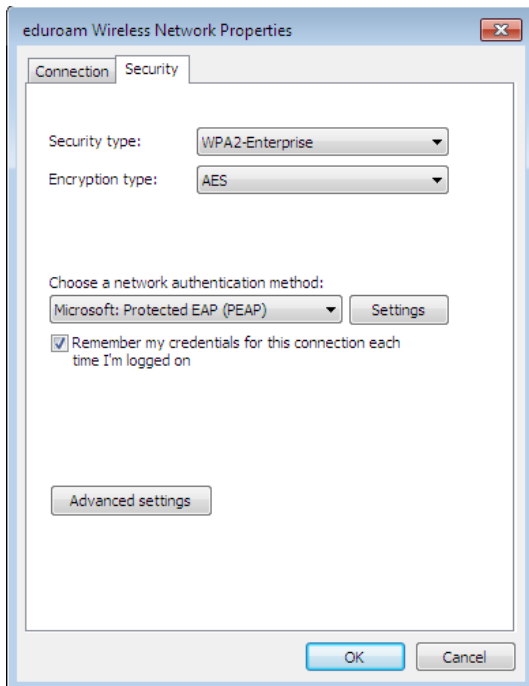
Select **Change connection settings**



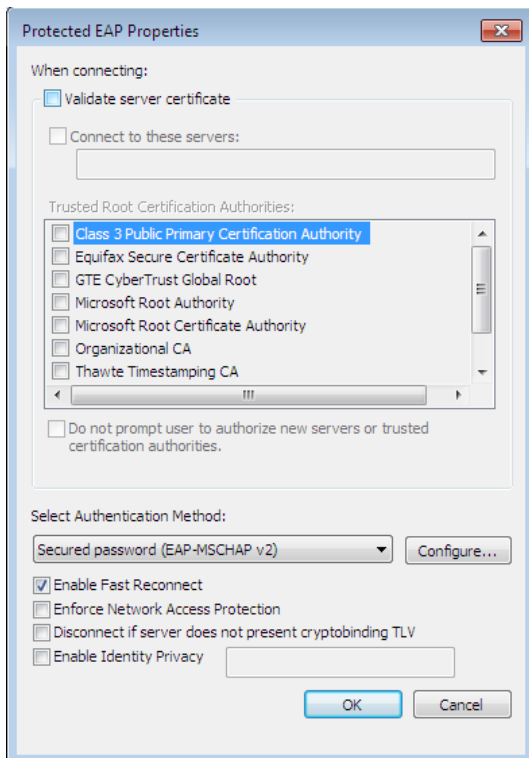
Select **Security**



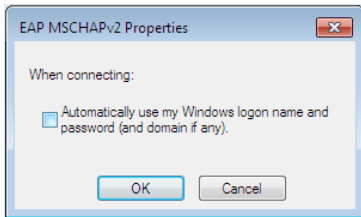
Select **Settings**



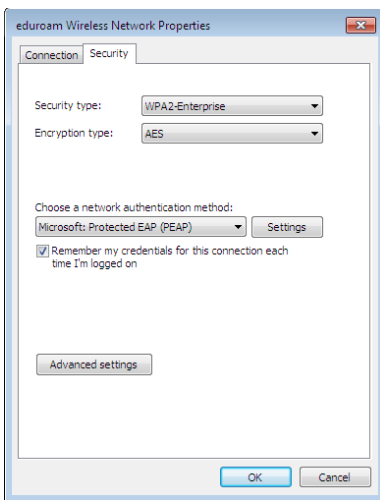
De-select **Validate server certificate**
Select **Configure**



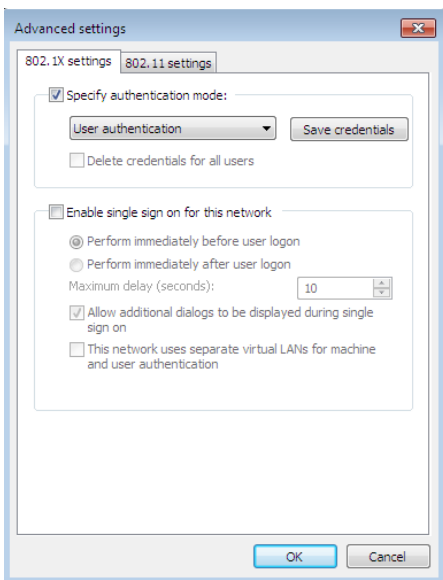
De-select **Automatically use my Windows logon name and password ...** and click **OK**

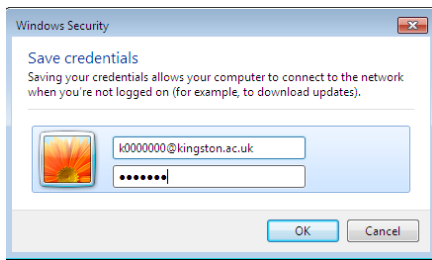


Select **Advanced Settings**



Enter the following information the select **Save Credentials**

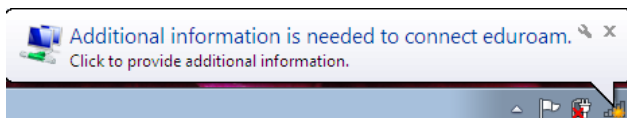




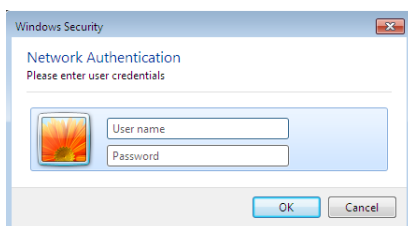
Enter your Kingston username and password in the form username@kingston.ac.uk

If you are a Kingston user and you only enter your username, this will work on the Kingston campus, but will not work on a different academic site (it doesn't know where to forward your login request). This method will save your credentials and log you on automatically whenever you connect to an eduroam service on any campus. Visitors to Kingston must use the recommended format

If at some future time you change your password, you will be prompted to provide your username and new password the next time you connect to eduroam



Click the banner and provide your username and password



STEP 3: CONNECT TO EDUROAM

Select the eduroam connection, click **Connect**, open your browser, make a connection and away you go

