

JANET ROAMING SERVICE

How to Configure the Windows Vista 802.1x supplicant

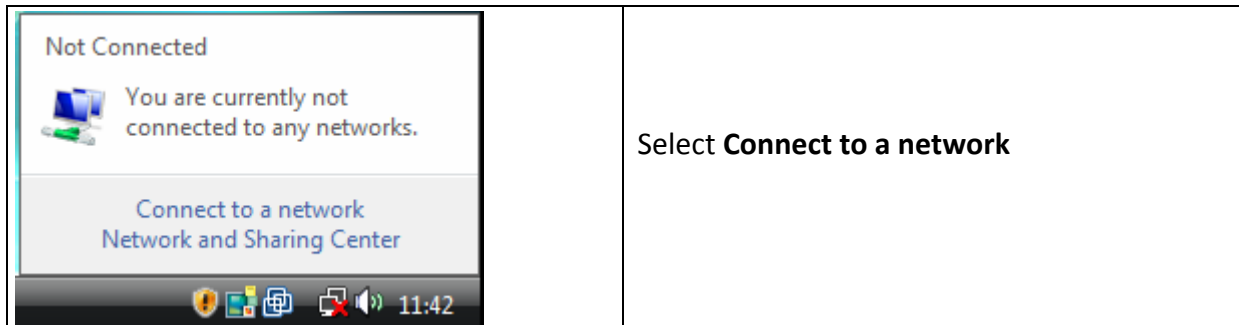
11 September 2008
V1.0

This document explains how to configure your Windows Vista wireless laptop to use the JANET Roaming Service (JRS) at Kingston University.

STEP 1: SELECT THE EDUROAM WIRELESS NETWORK

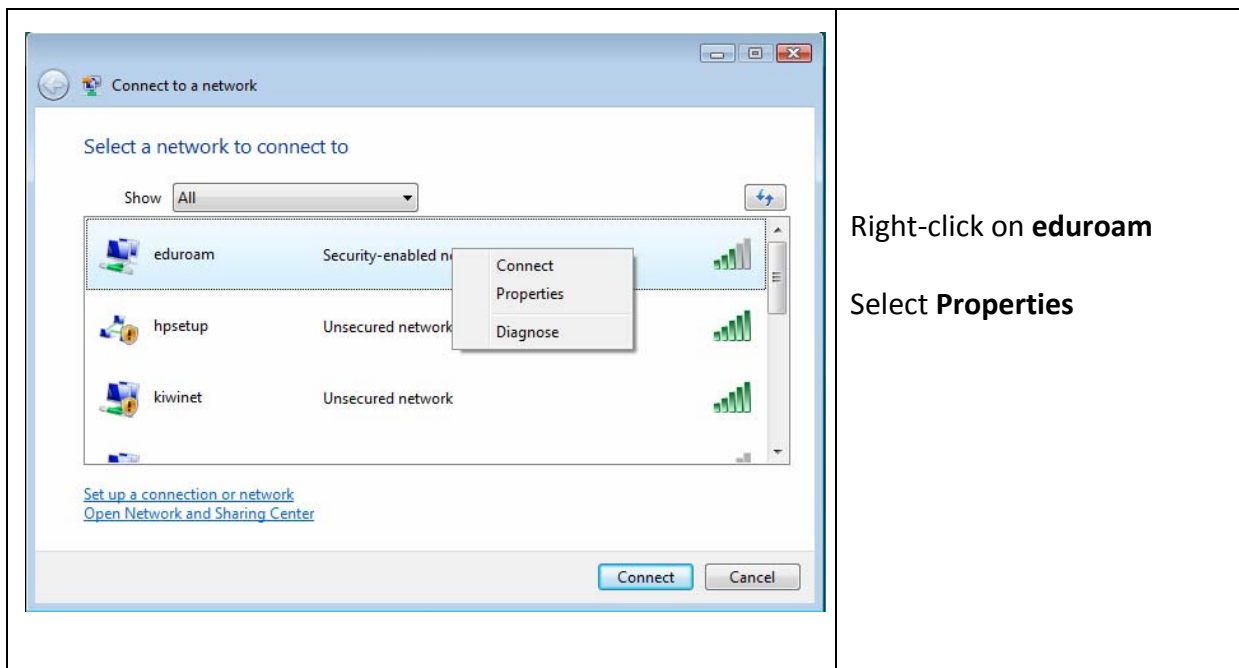
Make sure your wireless adaptor is turned on.

Click on the **network icon** in the system tray.

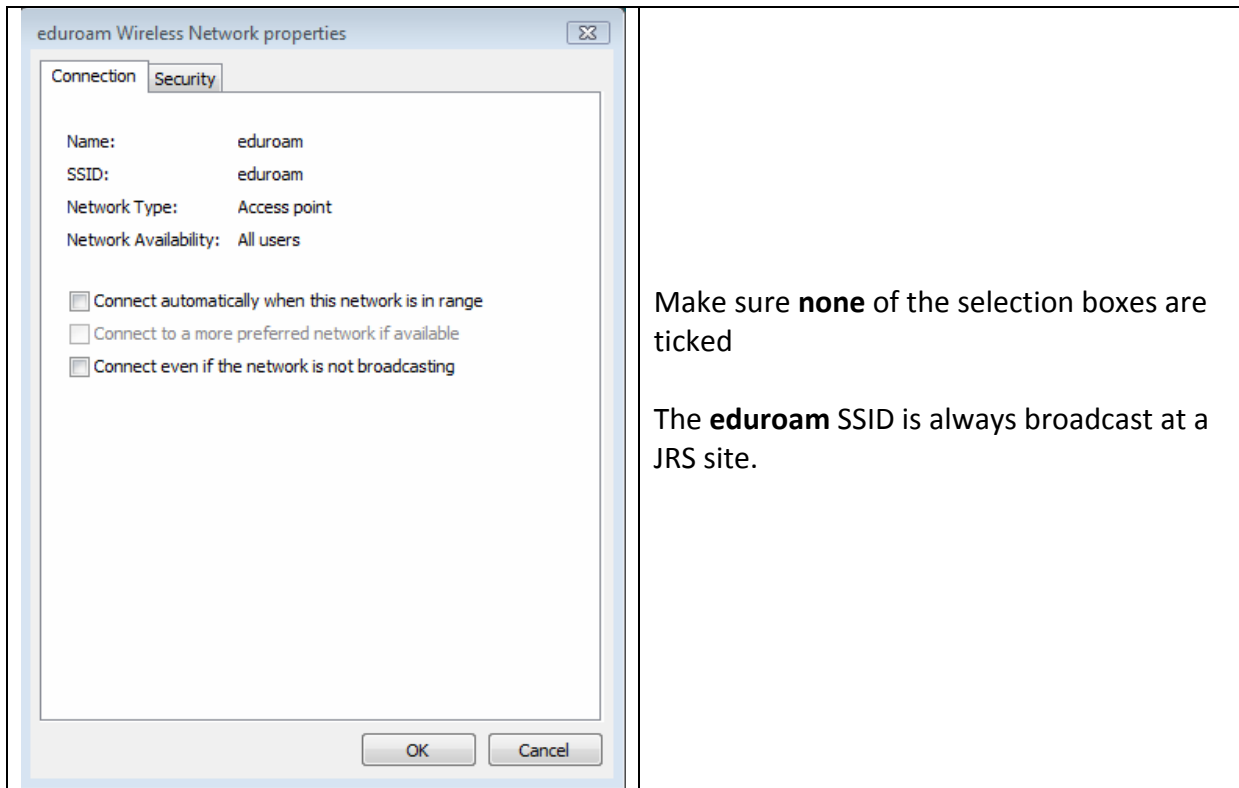


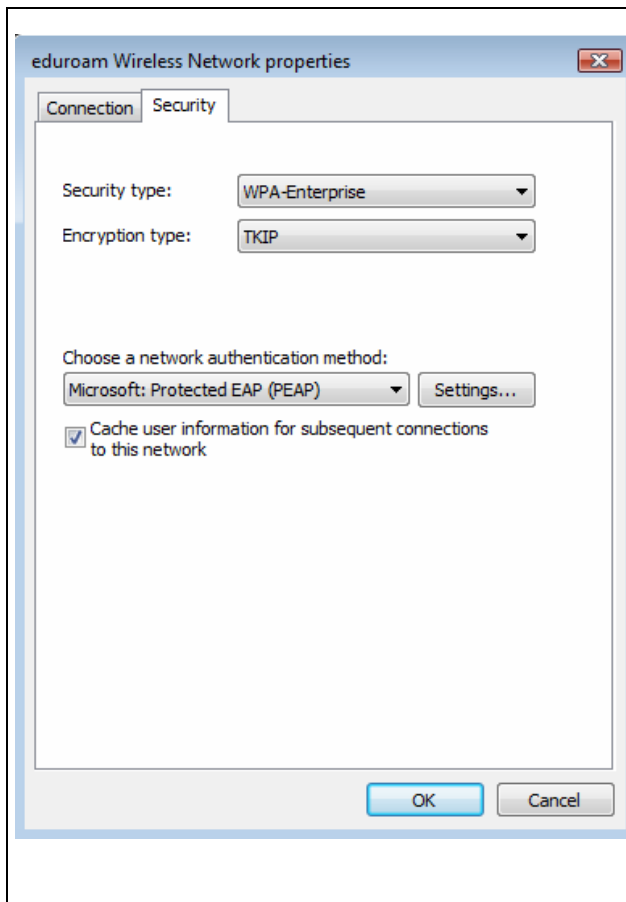
STEP 2: CONFIGURE EDUROAM PROPERTIES

The following window will appear:



The following window will appear:





Select the **Security** tab

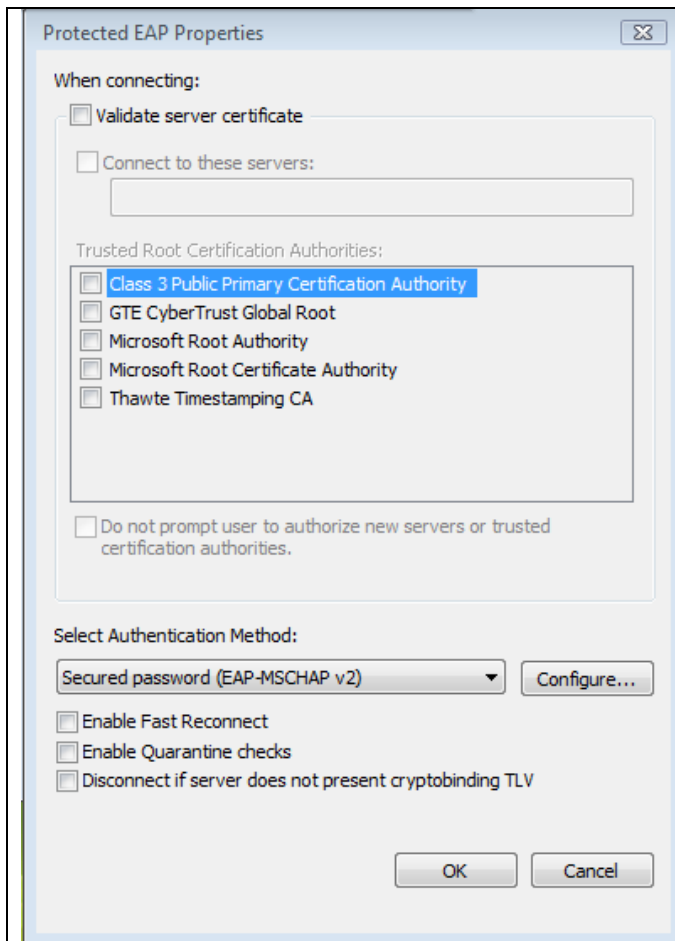
Security type: Select **WPA-Enterprise** from the drop-down list

Encryption type: Select **TKIP** from the drop-down list

Choose a network authentication method: Select **Microsoft: Protected EAP (PEAP)** from the drop-down list

Cache user information for subsequent connections to this network: If you tick this you, will be asked to authenticate once to connect to **eduroam**. Subsequent connections will be automatic. However, you will have to re-enter your credentials if you subsequently change your password.

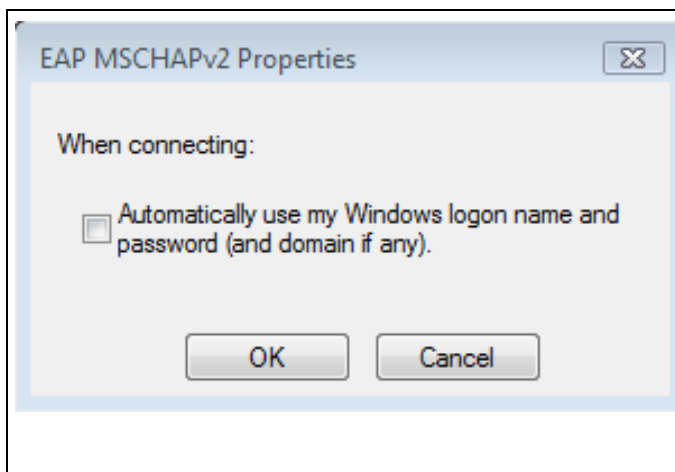
Select **Settings...**



Make sure **none** of the selection boxes are ticked

Select Authentication Method: Select **Secured password (EAP-MSCHAP v2)** from the drop-down list

Select **Configure...**

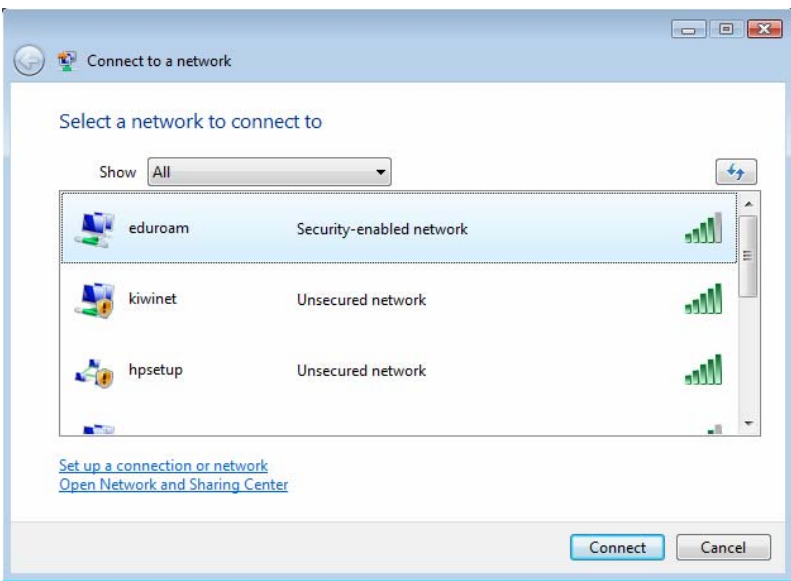


Un-tick the **Automatically use my Windows logon name and password (and domain if any)** box

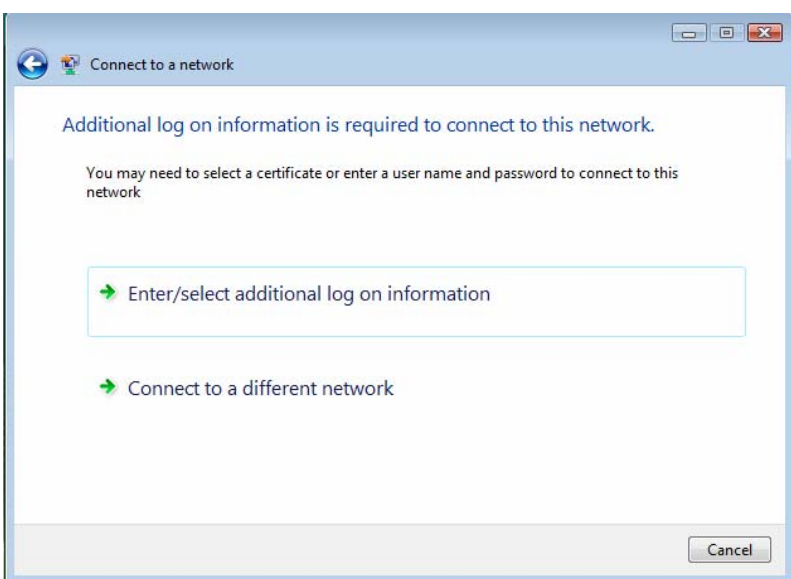
Click **OK**

Select **OK** on each dialogue box until you return to the **Connect to a network window**.

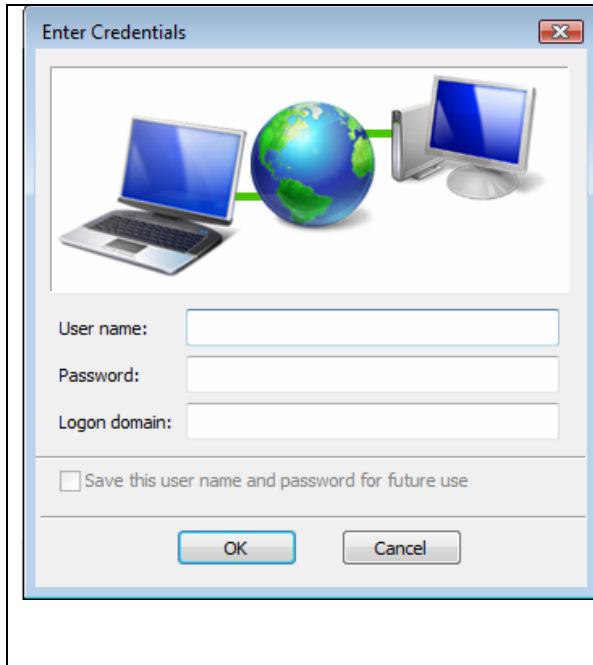
STEP 3: CONNECT TO EDUROAM

	<p>Select the eduroam network</p> <p>Click on Connect</p>
---	---

You will be asked for additional log on information to connect to the network.

	<p>Select Enter/select additional log on information</p>
---	---

The following window will appear:



Enter your username in the following format:

username@institution.ac.uk

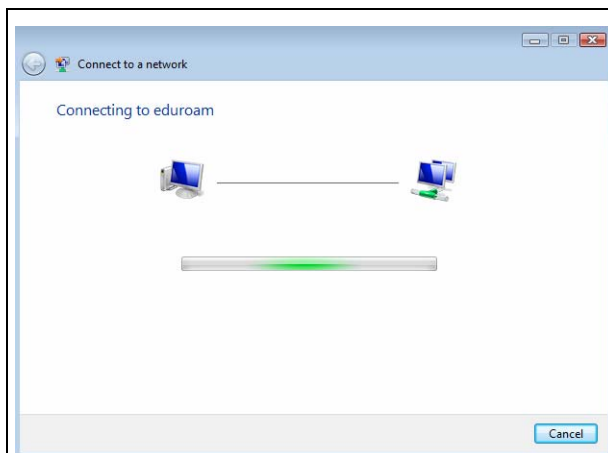
and your institution password

If you are a Kingston user, this would look like this:

kxxxxxx@kingston.ac.uk

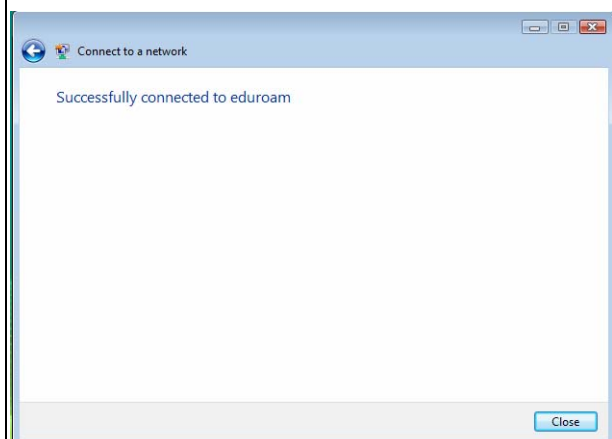
Select **OK**

You will then see the following window:



You will be authenticated to your institution Organisational RADIUS service.

You will be allocated an IP address and connected to the internet external to the Kingston University firewall.



If this fails you must report your problem to your home institution (not Kingston if you are a visitor to Kingston).

