

JANET ROAMING SERVICE

How to Configure the Windows XP 802.1x supplicant

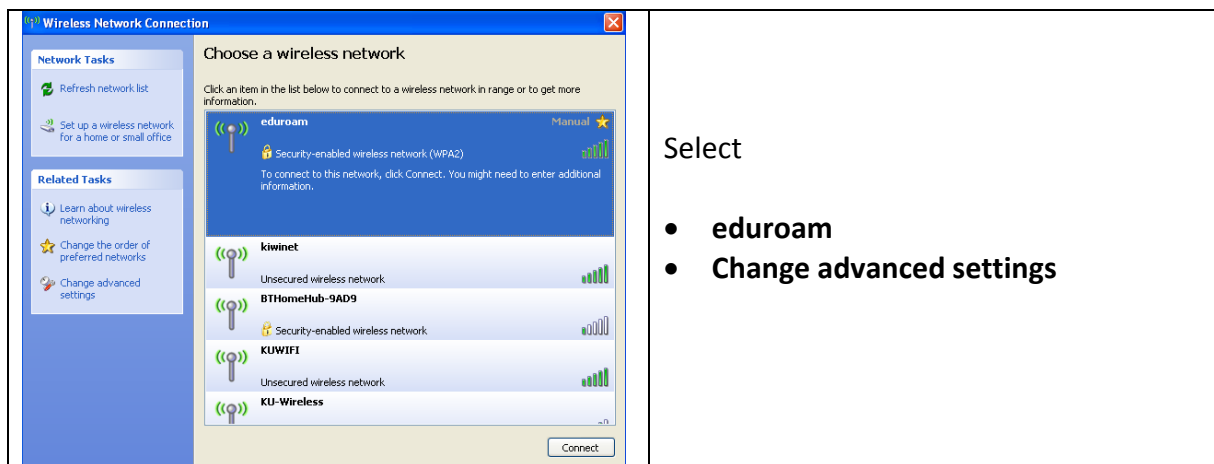
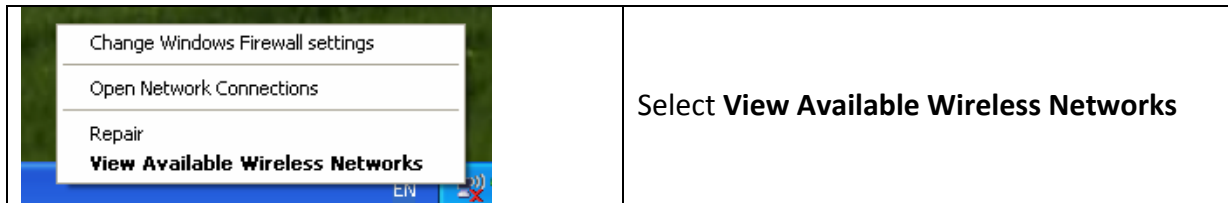
11 September 2008

V1.0

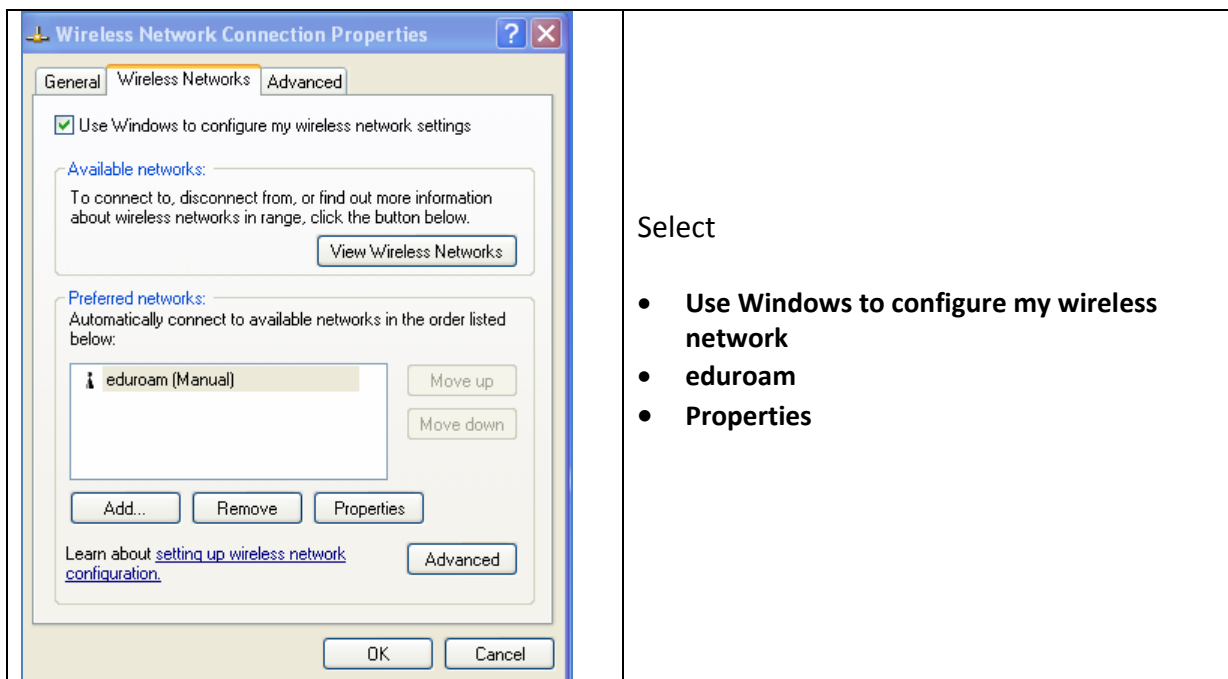
This document explains how to configure your Windows XP SP2/SP3 wireless laptop to use the JANET Roaming Service (JRS) at Kingston University.

STEP 1: SELECT THE EDUROAM WIRELESS NETWORK

Make sure your wireless adaptor is switched on
Right-click the **wireless network icon** in the System Tray



Select Wireless Networks



STEP 2: CONFIGURE EDUROAM PROPERTIES

The screenshot shows the 'eduroam properties' dialog box with the 'Association' tab selected. The 'Network name (SSID)' is 'eduroam'. The checkbox 'Connect even if this network is not broadcasting' is checked. Under 'Wireless network key', 'Network Authentication' is set to 'WPA2' and 'Data encryption' is set to 'TKIP'. The 'Network key' and 'Confirm network key' fields are empty. The 'Key index (advanced)' is set to '1'. The checkbox 'The key is provided for me automatically' is checked. The checkbox 'This is a computer-to-computer (ad hoc) network; wireless access points are not used' is unchecked. The 'OK' and 'Cancel' buttons are at the bottom.

The **eduroam** SSID is always broadcast on a JRS site.

Network Authentication:

Select **WPA** or **WPA2** from the drop-down-list

Data Encryption:

Select **TKIP** from the drop-down list

Make sure **The key is provided for me automatically** is selected

Select the **Authentication** tab

The screenshot shows the 'eduroam properties' dialog box with the 'Authentication' tab selected. The text 'Select this option to provide authenticated network access for wireless Ethernet networks.' is displayed. The checkbox 'Enable IEEE 802.1x authentication for this network' is checked. The 'EAP type' dropdown is set to 'Protected EAP (PEAP)'. There is a 'Properties' button. The checkboxes 'Authenticate as computer when computer information is available' and 'Authenticate as guest when user or computer information is unavailable' are unchecked. The 'OK' and 'Cancel' buttons are at the bottom.

Make sure **Enable IEEE 802.1x authentication for this network** is ticked

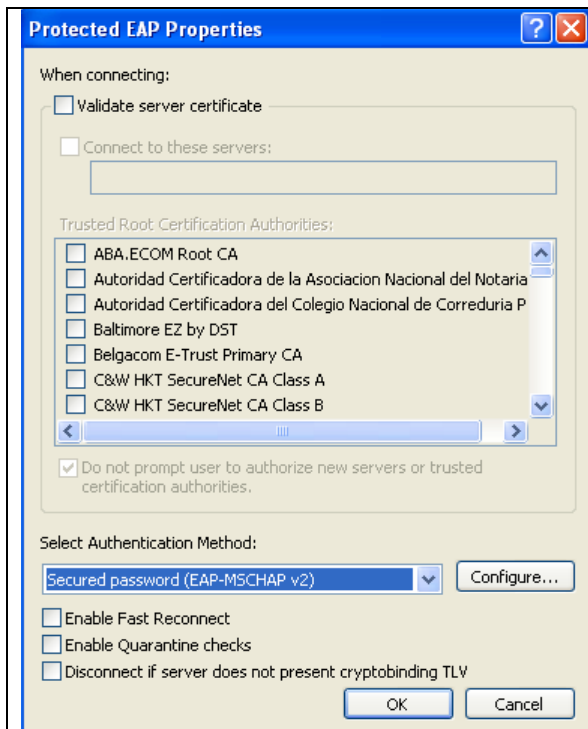
EAP Type:

Select **Protected EAP (PEAP)** from the drop-down list

Do **not** select

- **Make sure that Authenticate as computer when this information is available**
- **Authenticate as guest when user or computer information is unavailable are not selected**

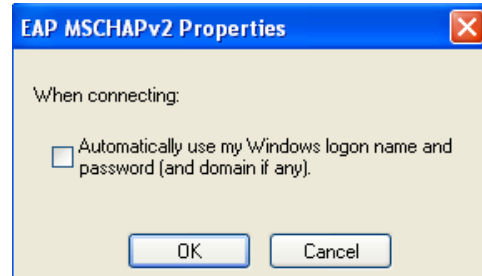
Select **Properties**



Do not select **Validate this certificate**

Select **Secured password (EAP-MSCHAP v2)** from the drop down list

Select **Configure**



Make sure **Automatically use my Windows login name and password (and domain if any)** is not selected

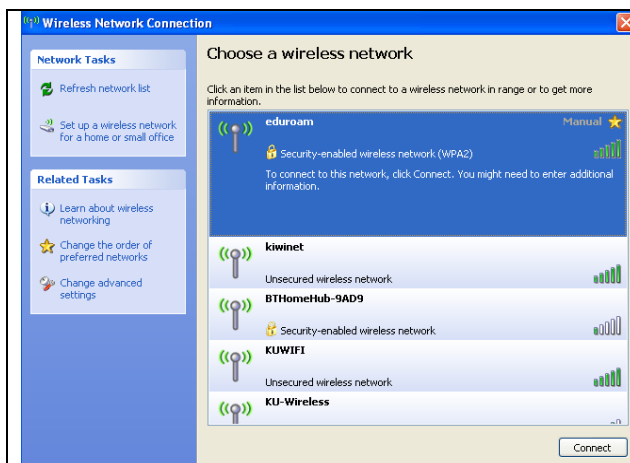
Select OK at each dialogue box to exit the procedure.

STEP 3: CONNECT TO EDUROAM

Right-click the **wireless network icon** in the system tray

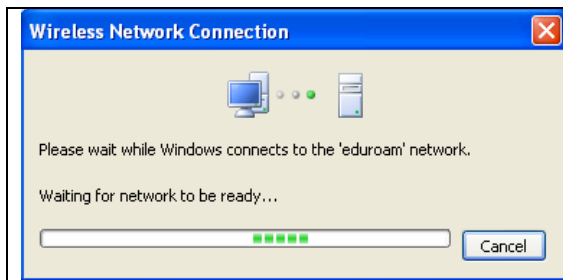


Select **View Available Wireless Networks**



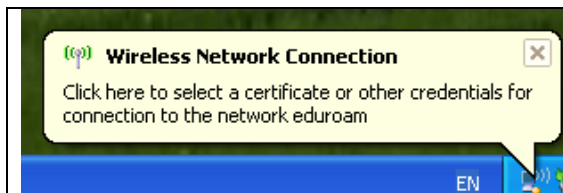
Select

- **eduroam**
- **Connect**



Windows connects to the **eduroam** network

A balloon will appear against the **wireless network** icon in the System Tray



Click on the balloon



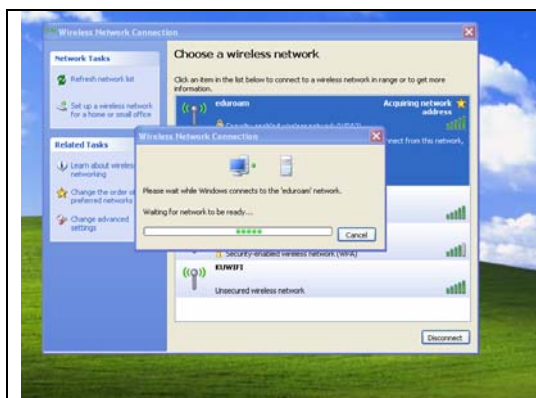
Enter your username in the following format

username@instiution.ac.uk

and your institution password

If you are a Kingston user this would look like this

kxxxxxx@kingston.ac.uk



You will be authenticated to your institution Organisational RADIUS service. If this succeeds, you will be allocated an IP address and connected to the internet external to the Kingston University firewall.

Your institution keeps a log record of your access.

If this fails you must report your problem to your home institution (not Kingston if you are a visitor to Kingston)

